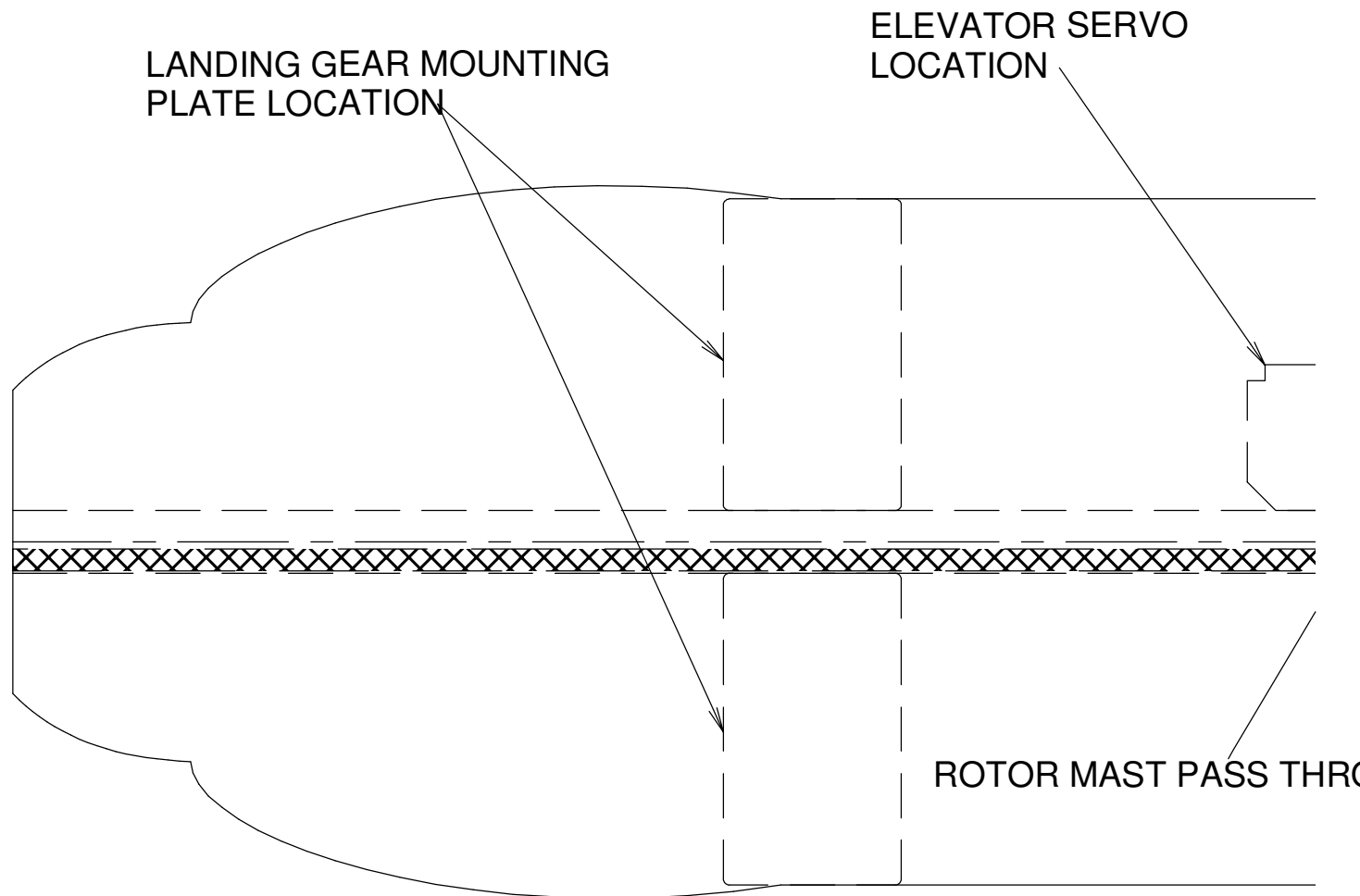


NOTE: ADJUST ELEVATOR AND OR  
RUDDER SERVO POSITION TO GET  
THE CORRECT CENTER OF GRAVITY



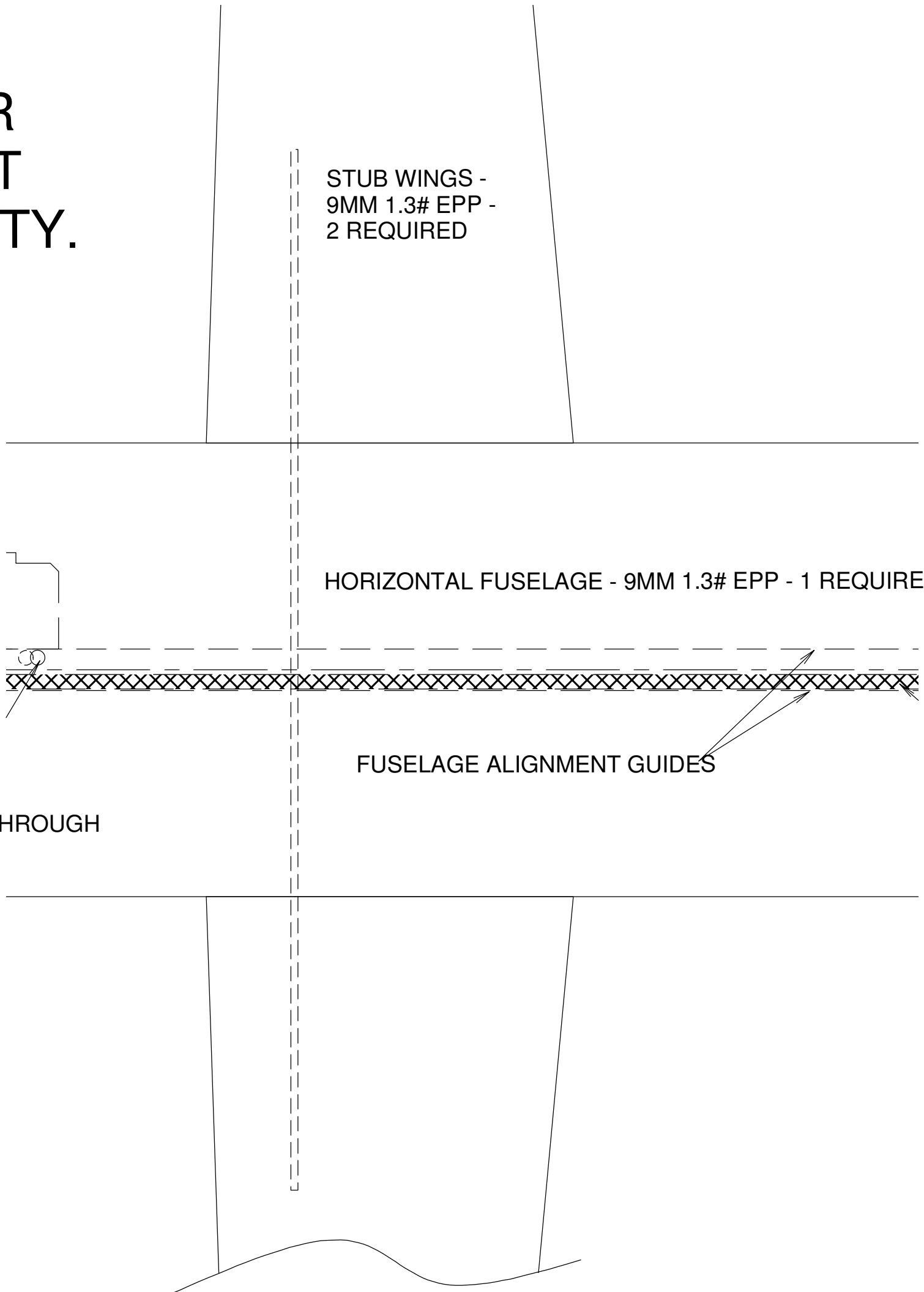
R  
ET  
VITY.

STUB WINGS -  
9MM 1.3# EPP -  
2 REQUIRED

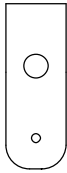
HORIZONTAL FUSELAGE - 9MM 1.3# EPP - 1 REQUIRED

FUSELAGE ALIGNMENT GUIDES

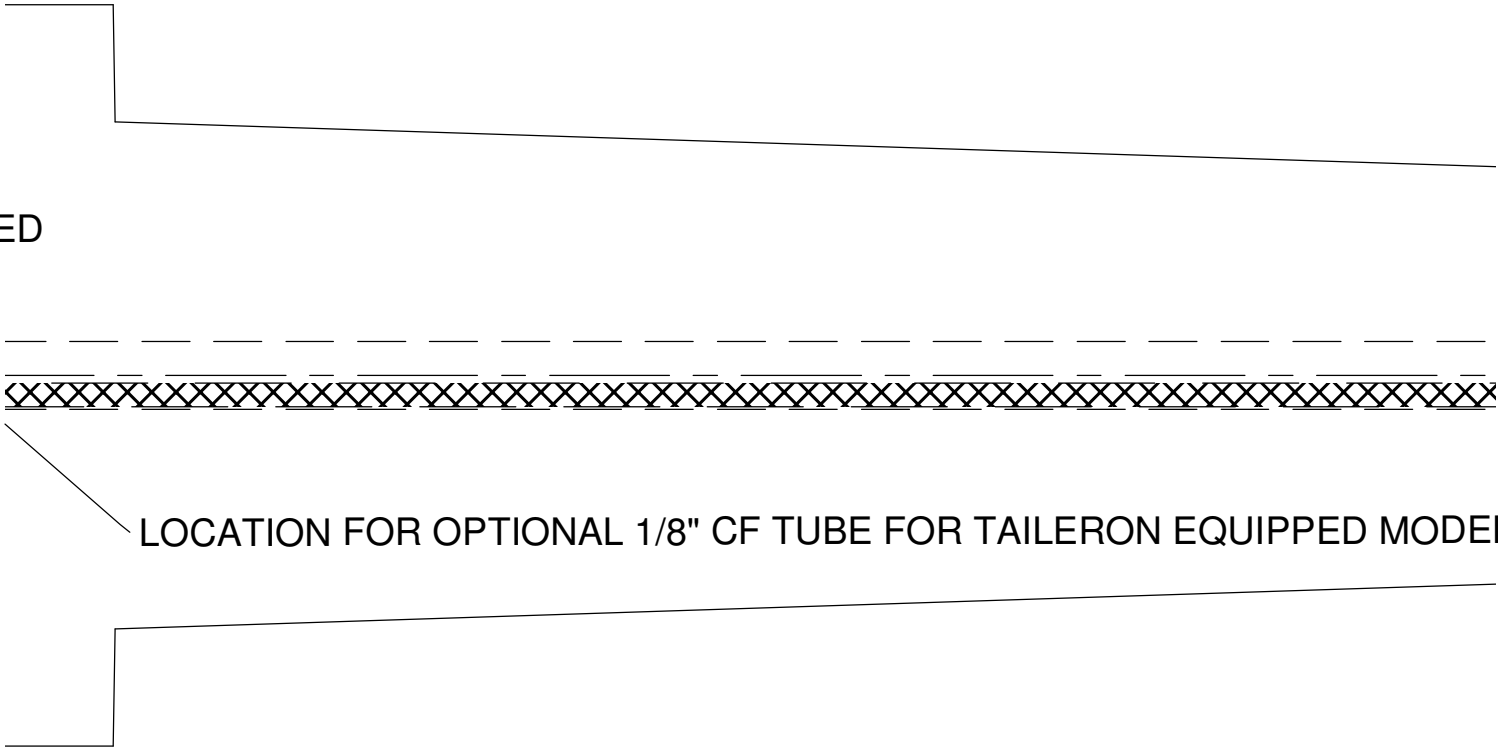
THROUGH



STUB WINGERON HORN  
WOOD STIRRER STICK OR 1/16" PLY  
2 REQUIRED - FOR PRO 4 CHANNEL VERSION O



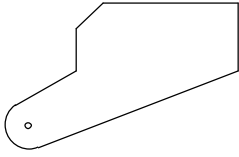
REQUIRED



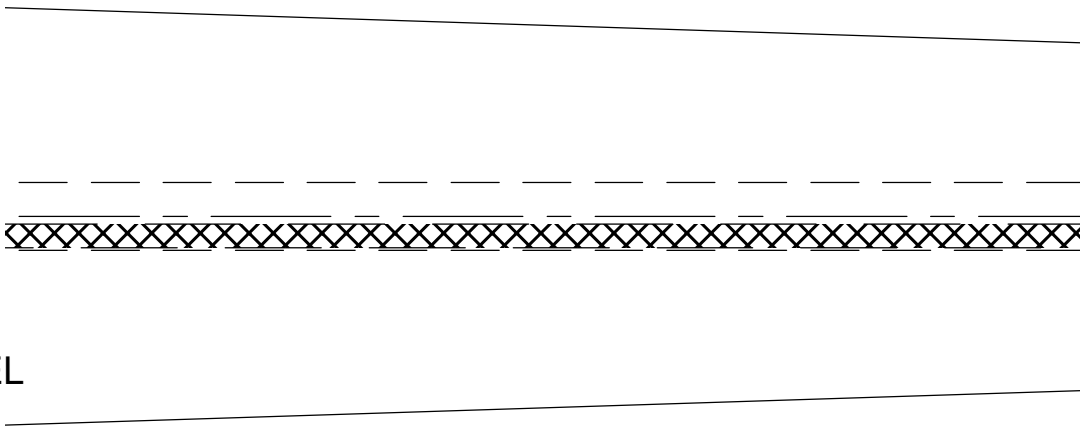
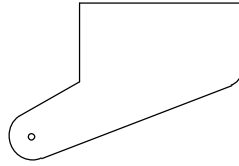
LOCATION FOR OPTIONAL 1/8" CF TUBE FOR TAILERON EQUIPPED MODEL

PLY  
ON ONLY

ELEVATOR HORN - 1/16" PLY  
1 REQUIRED

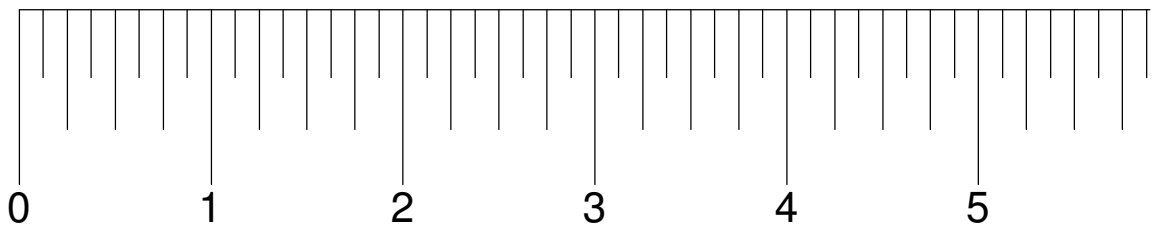


RUDDER HORN - 1/16" PLY  
1 REQUIRED

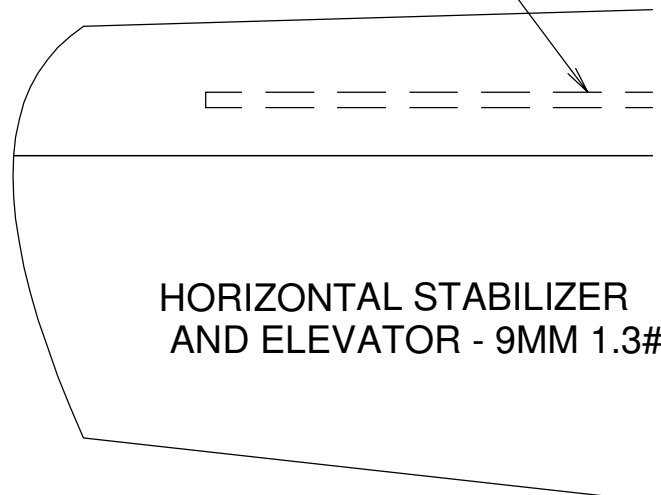


DEL

INCH SCALE

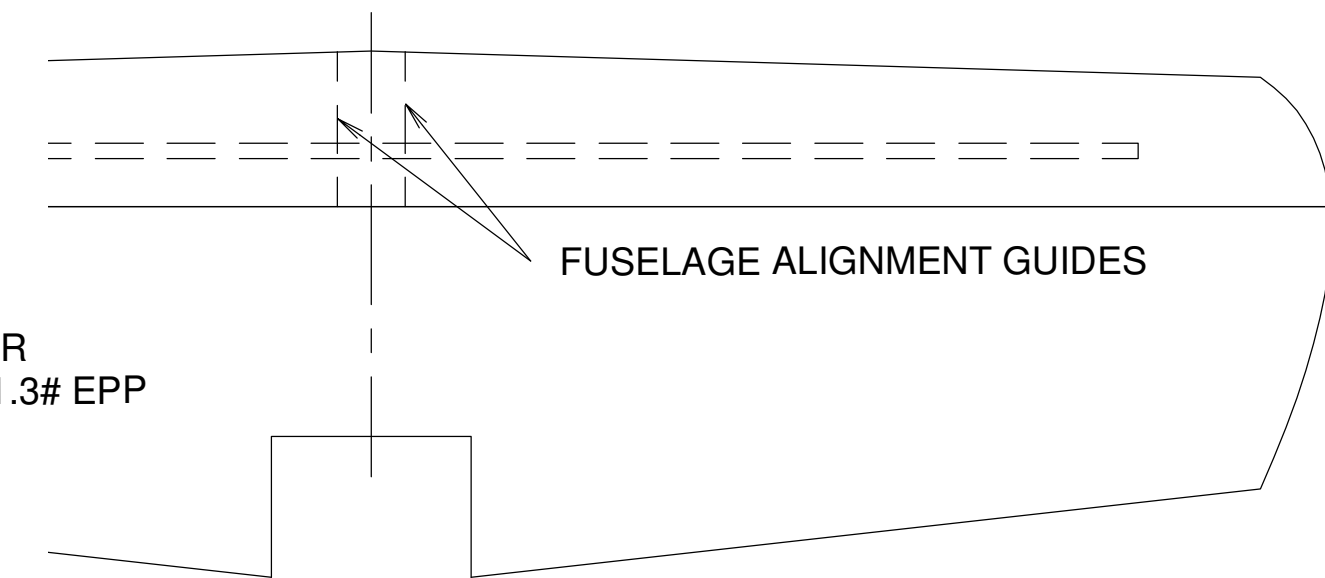


CF SPAR LOCATION



HORIZONTAL STABILIZER  
AND ELEVATOR - 9MM 1.3# E

OPTIONAL FUSELAGE REINFORCEMENT - .125 DIA CARBON FIBER



R  
.3# EPP

FUSELAGE ALIGNMENT GUIDES

CHANGE A 21-FE-2010	UPGRADED ROTOR. MOVED CENTER OF GRAVITY FORWARD 1/4". SHOWED DETAILS FOR 4 CHANNEL P MOVED LANDING GEAR FORWARD 1/2".

## Materials:

Airframe 9mm 1.3 lb epp, 3mm carbon tube

Rotor 3mm Depron, 1.5mm carbon rods

Hub: 3/32 brass tubing, 1/32 and 1/16 ply

Motor Turnigy 2730-1500, 8043 prop

Plastic motor stick

Servos HXT 500

Battery 3s - 360 mAh Rhino

Mystery 12 A esc

# APACHE AG-64 FUSELAGE ASSEMBLY

**DESIGNED BY LEADFEATHER  
CAD BY DZISFB**

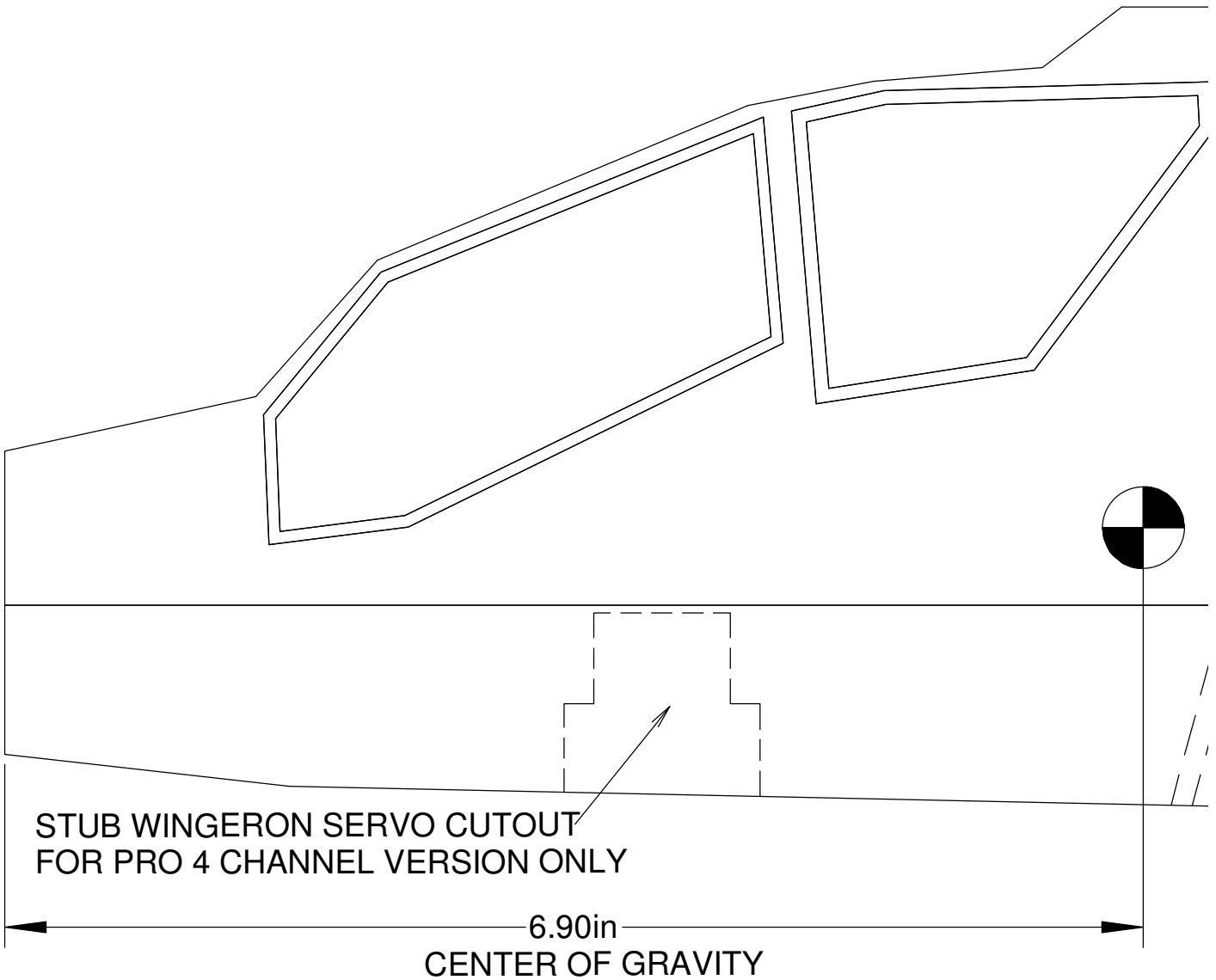
COMMERCIAL RIGHTS RESERVED 24-JAN-2010

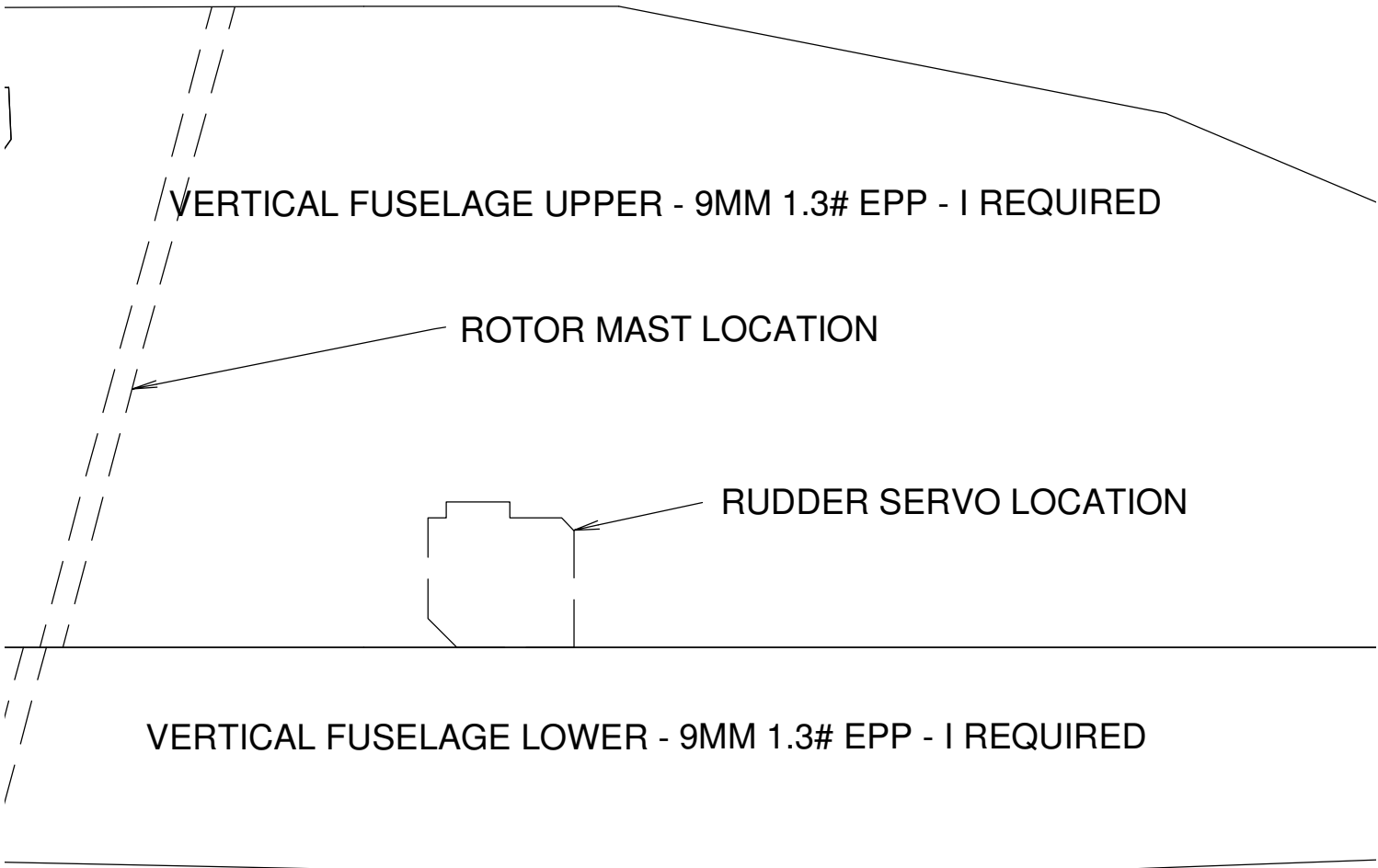
ubes

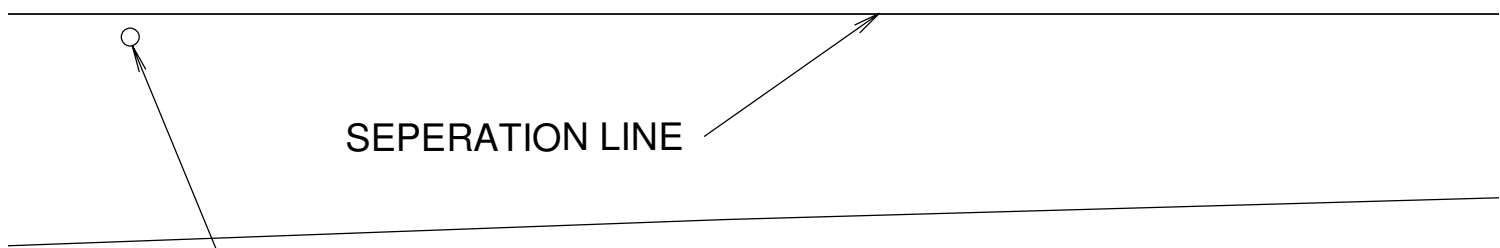
y

**BLY**

2010

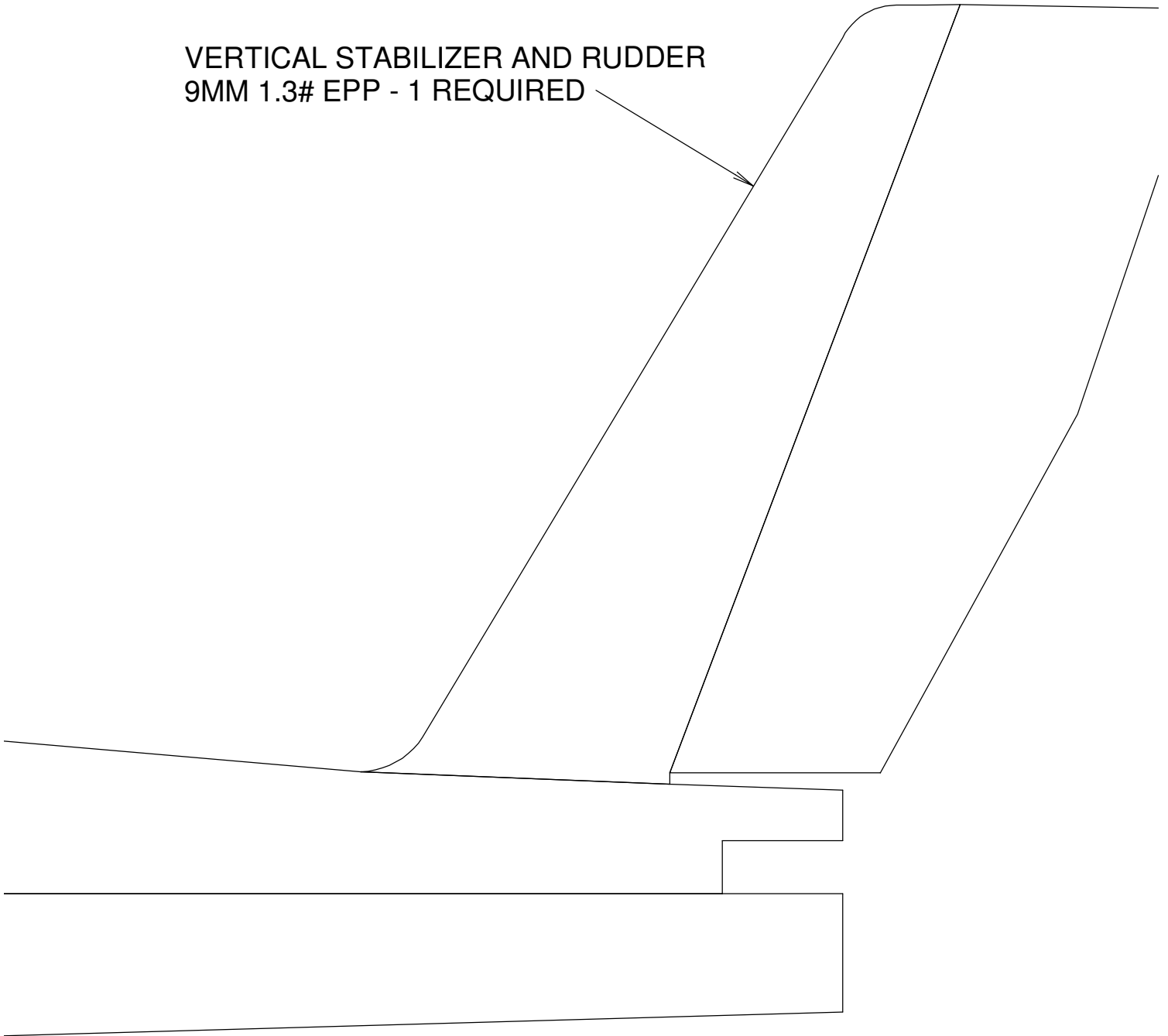






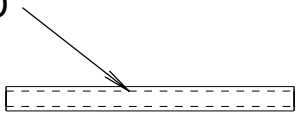
ANCHOR POINT FOR  
LANDING GEAR RETENTION THREAD

VERTICAL STABILIZER AND RUDDER  
9MM 1.3# EPP - 1 REQUIRED

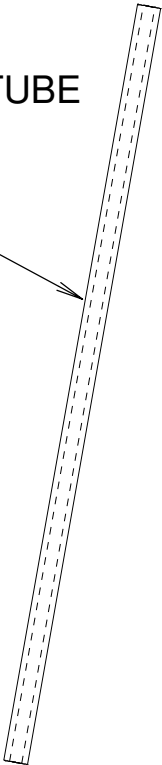


7

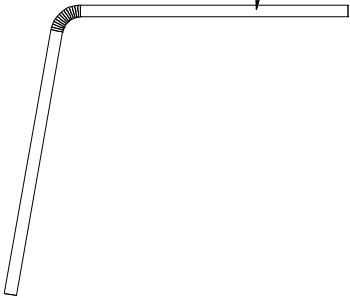
LANDING GEAR BEARING TUBE  
MADE FROM NYROD PUSHROD  
INNER - 2 REQUIRED



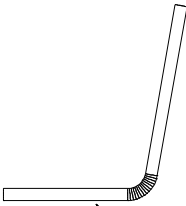
LANDING GEAR LEG  
.125" X 4" CARBON FIBER TUBE  
4 REQUIRED



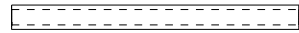
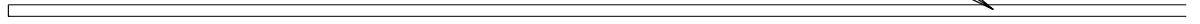
UPPER LANDING GEAR  
1/16" MUSIC WIRE



LOWER LANDING GEAR  
1/16" MUSIC WIRE

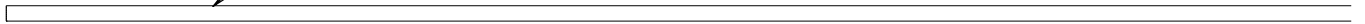


STUB WINGERON PIVOT - 1 REQ.  
1/16" MUSIC WIRE

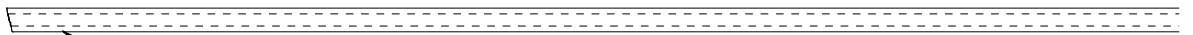


STUB WINGERON PIVOT BUSHING  
MAKE FROM Q-TIP SHAFT OR NYROD INM  
2 REQ 1.5" LONG

HORIZONTAL STABILIZER SPAR - 1 REQ.  
08" CARBON FIBER ROD X 8" LONG



ROTOR MAST SPINDLE - 1 REQ.  
1/16" MUSIC WIRE 3.5" LONG

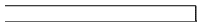
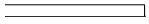


ROTOR MAST - .125" CARBON FIBER TUBE 6.38" LONG - 1

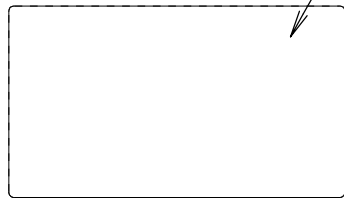


OPTIONAL FUSELAGE REINFORCEMENT - .125 DIA CARBON FIBER

OD INNER

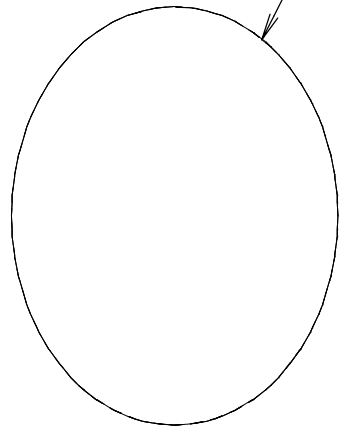


EQ.



LANDING GEAR  
MOUNTING PLATE  
1/32" PLYWOOD  
2 REQUIRED

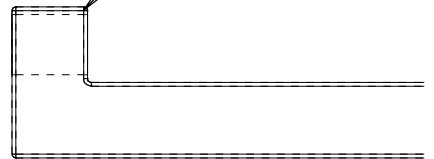
OPTIONAL FIBER  
MOUNT 1/8" L



BRIDGE FOR AILERON SERVO CUT OUT  
1/16" PLYWOOD 9MM WIDE X 2" LONG



COMMERCIAL  
STICK MOTOR



NG - 1 REQ.



FIBER TUBE



AL FIREWALL  
1/8" LITE PLY

SPECIALLY AVAILABLE  
MOTOR MOUNT

