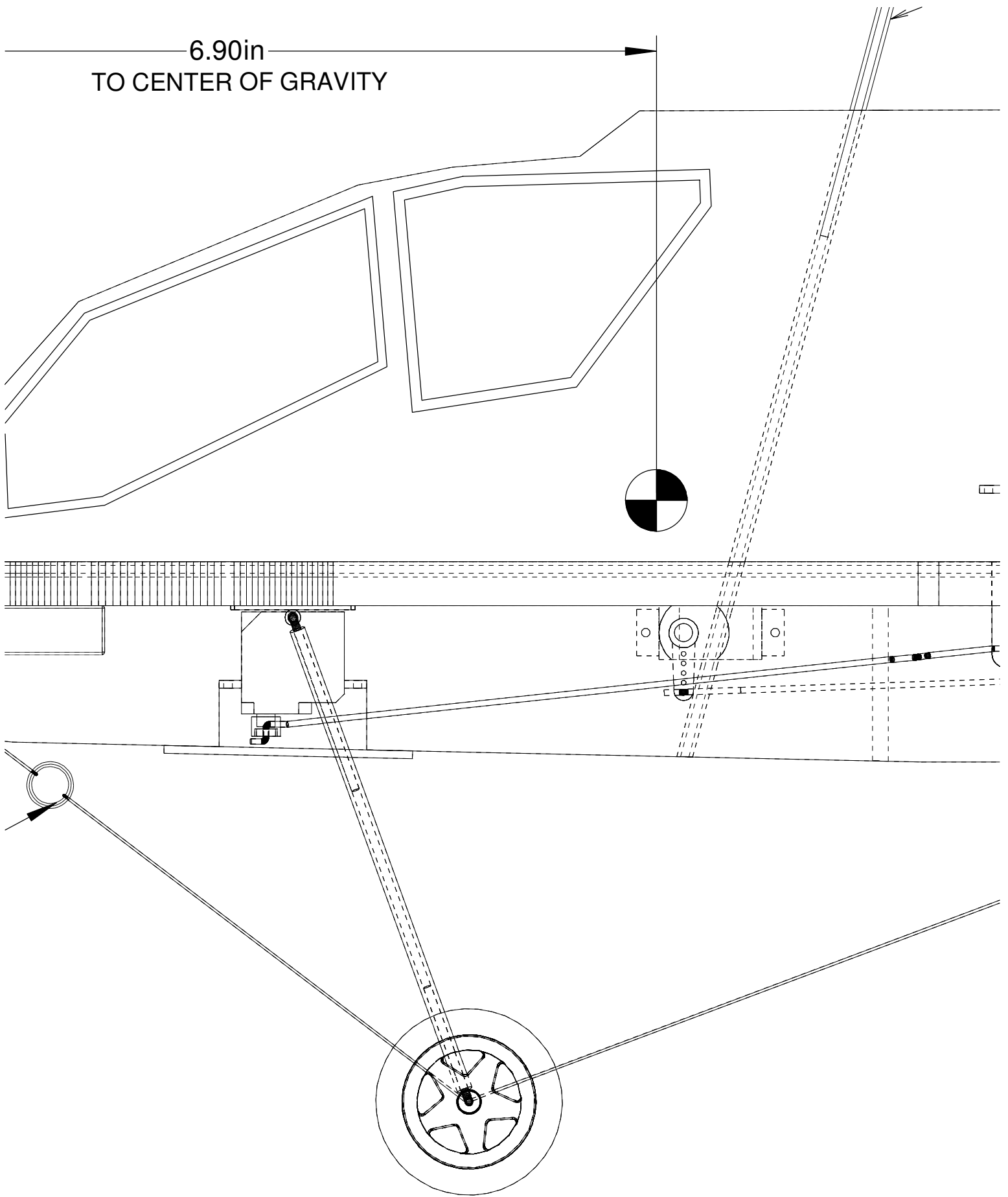
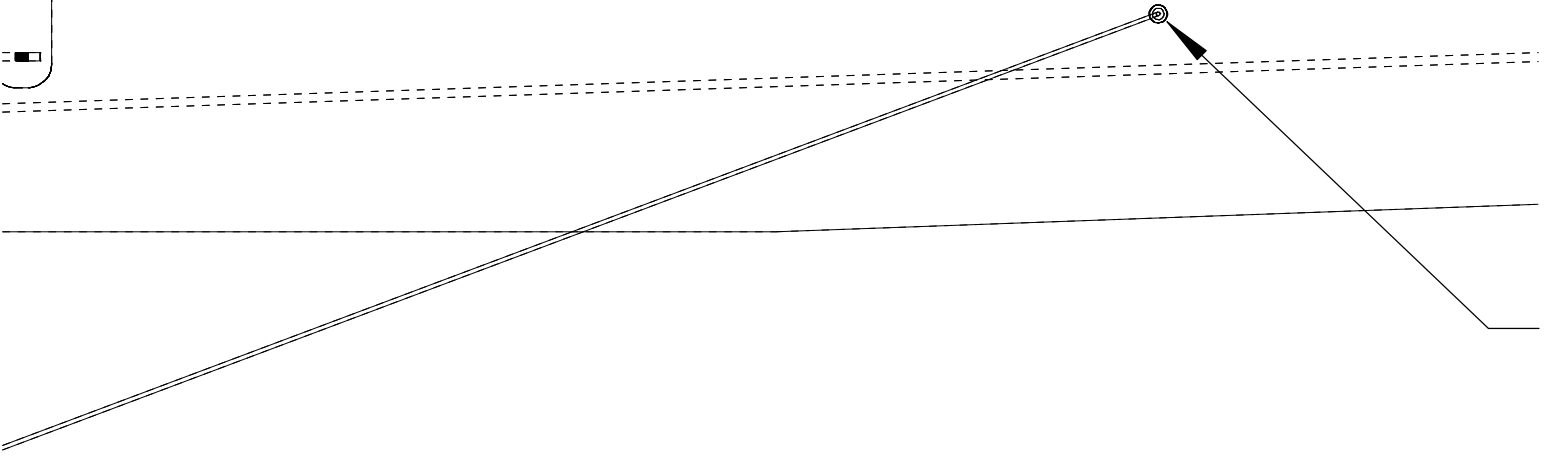
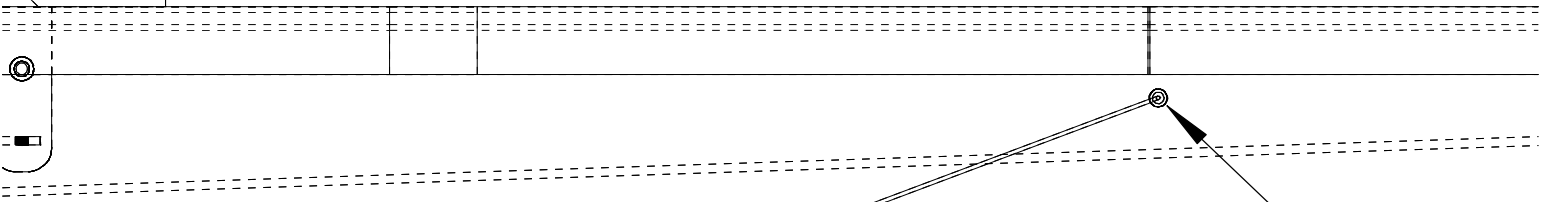
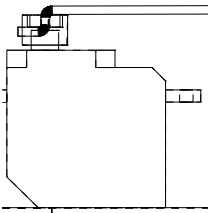
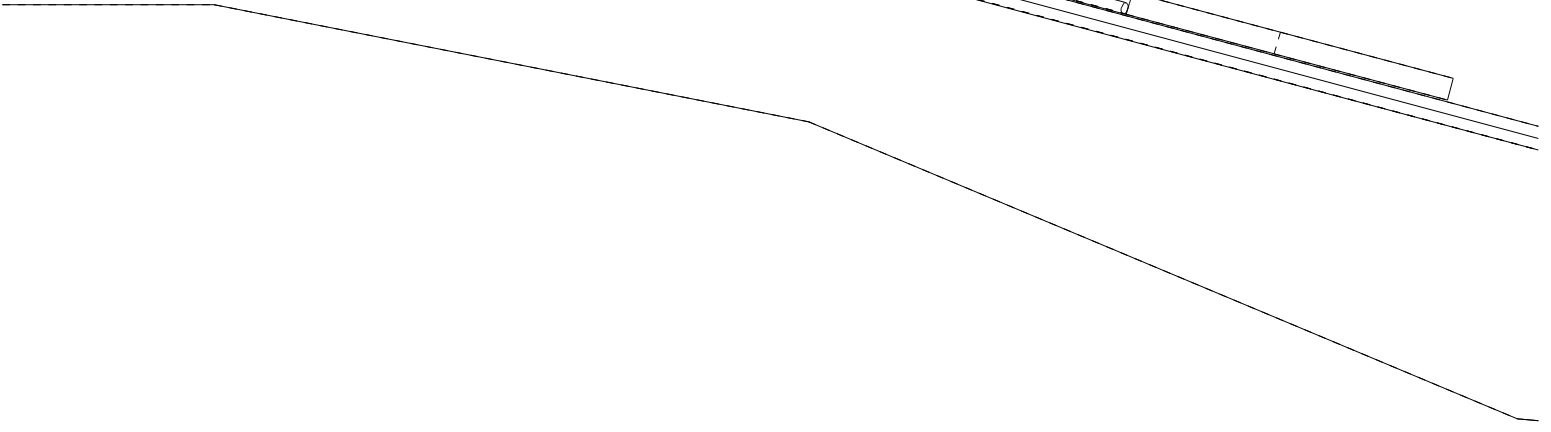
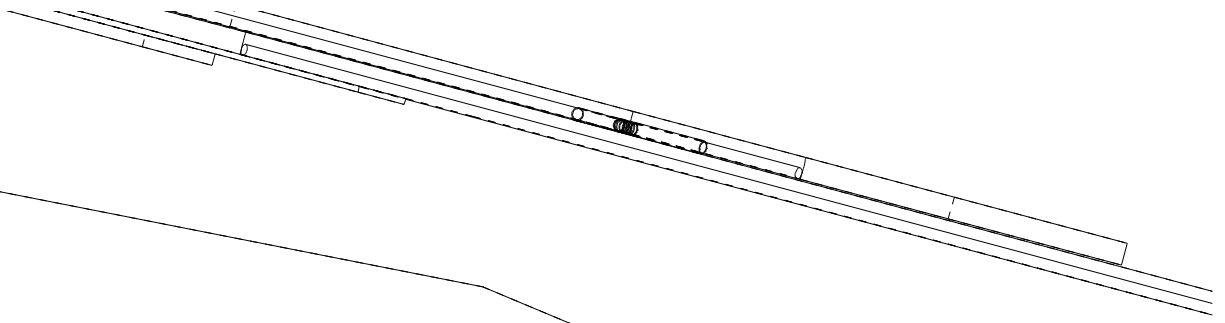
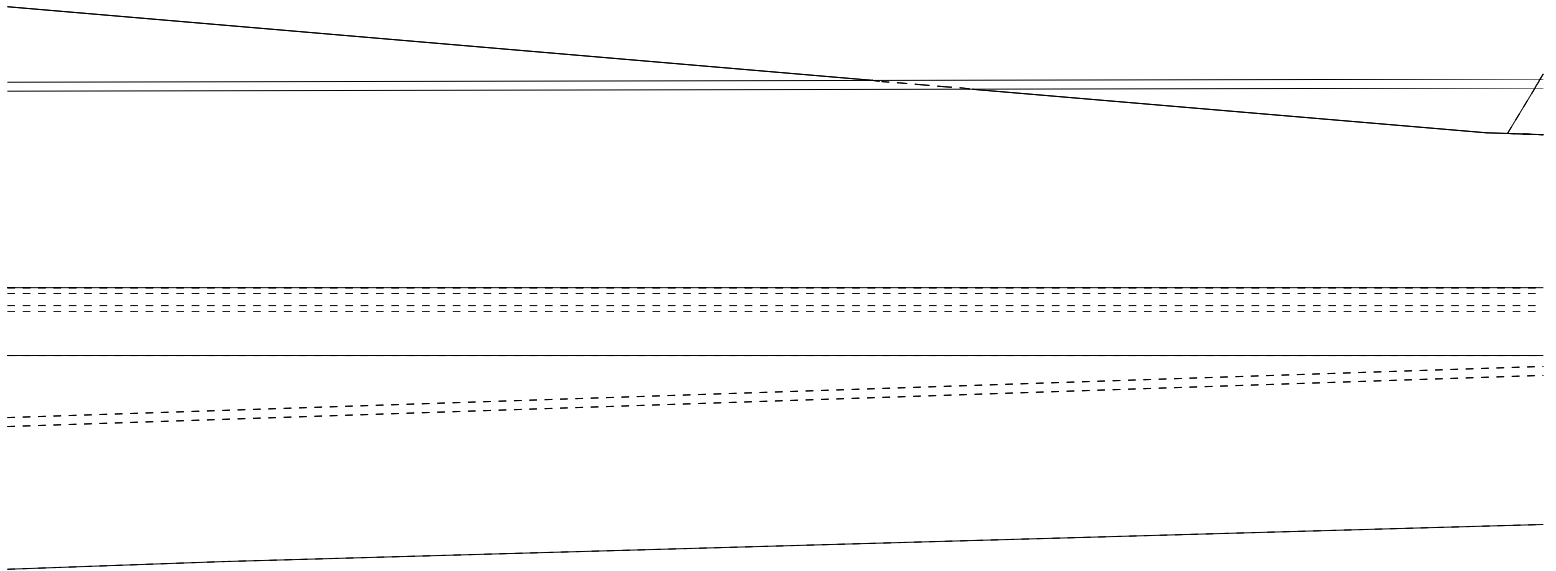
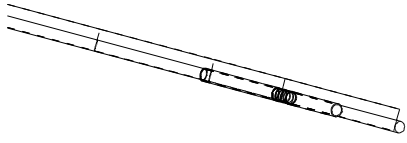


PROP SAVER O-RING
ACTS AS SHOCK ABSORBER

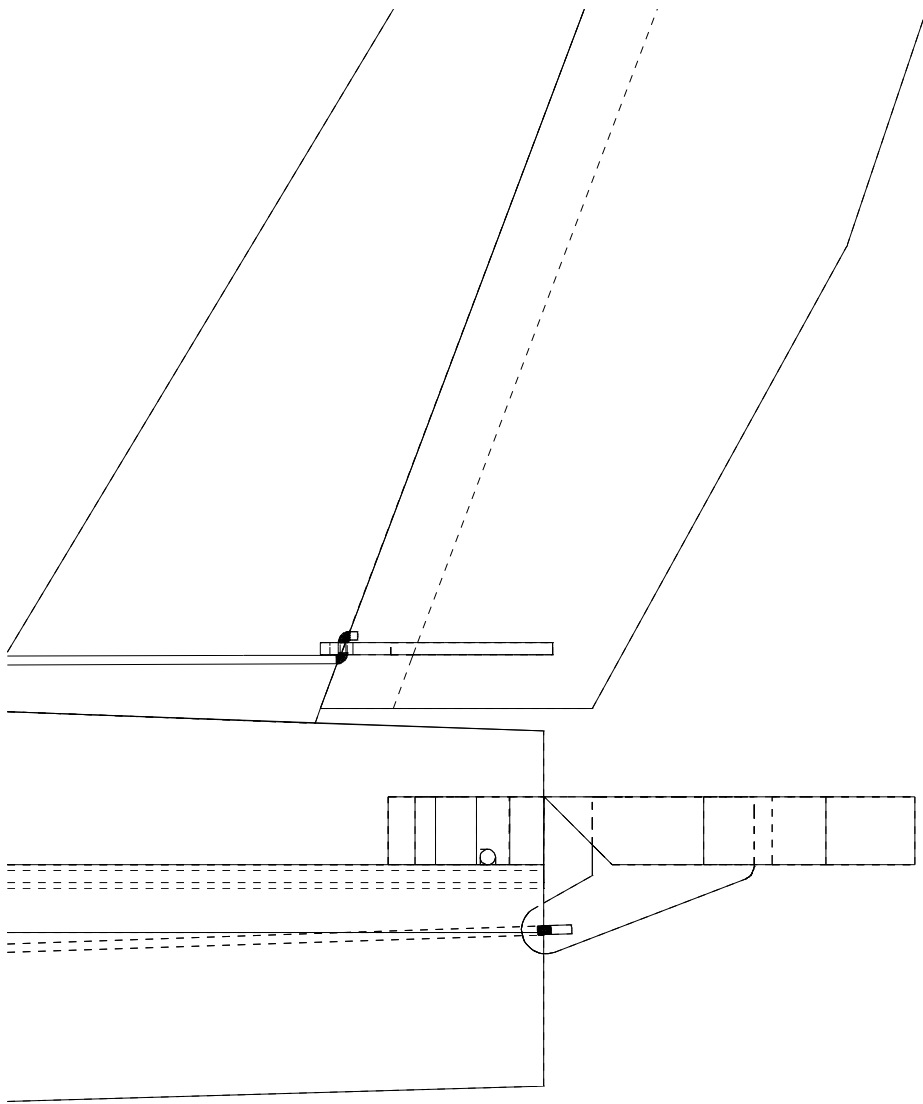
6.90in
TO CENTER OF GRAVITY







- SMALL PLASTIC TUBE IN FOAM TO
SERVE AS ANCHOR POINT FOR
LANDING GEAR RETENTION THREAD



APACHE AG-64

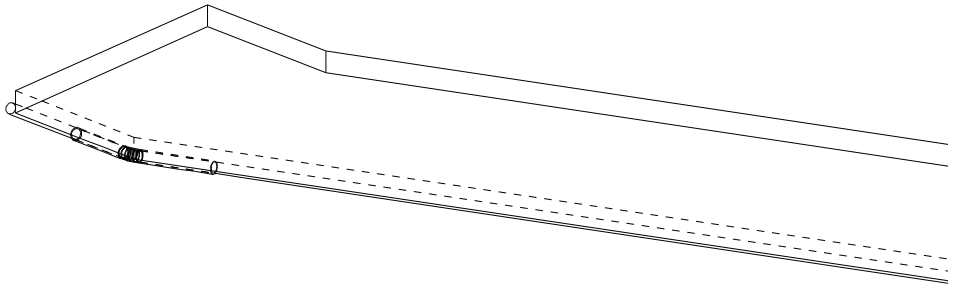
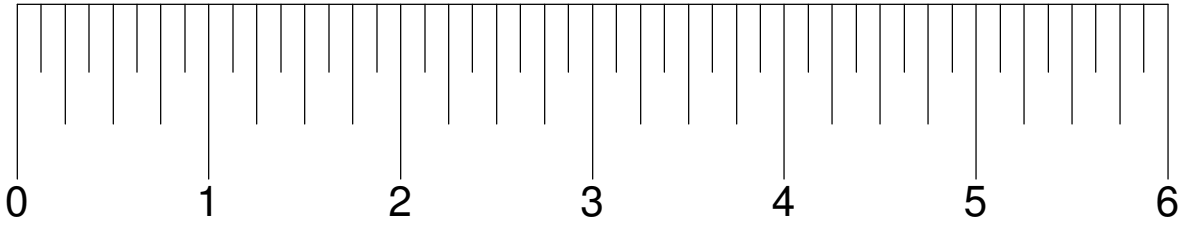
DESIGNED BY LEADFEATHER

CAD BY DZISFB

COMMERCIAL RIGHTS RESERVED 24-JAN-2010

CHANGE A 21-FE-2010	UPGRADED ROTOR. MOVED CENTER OR GRAVITY FORWARD 1/4". SHOWED DETAILS FOR 4 CHANNEL PRO MOD. MOVED LANDING GEAR FORWARD 1/2".
------------------------	--

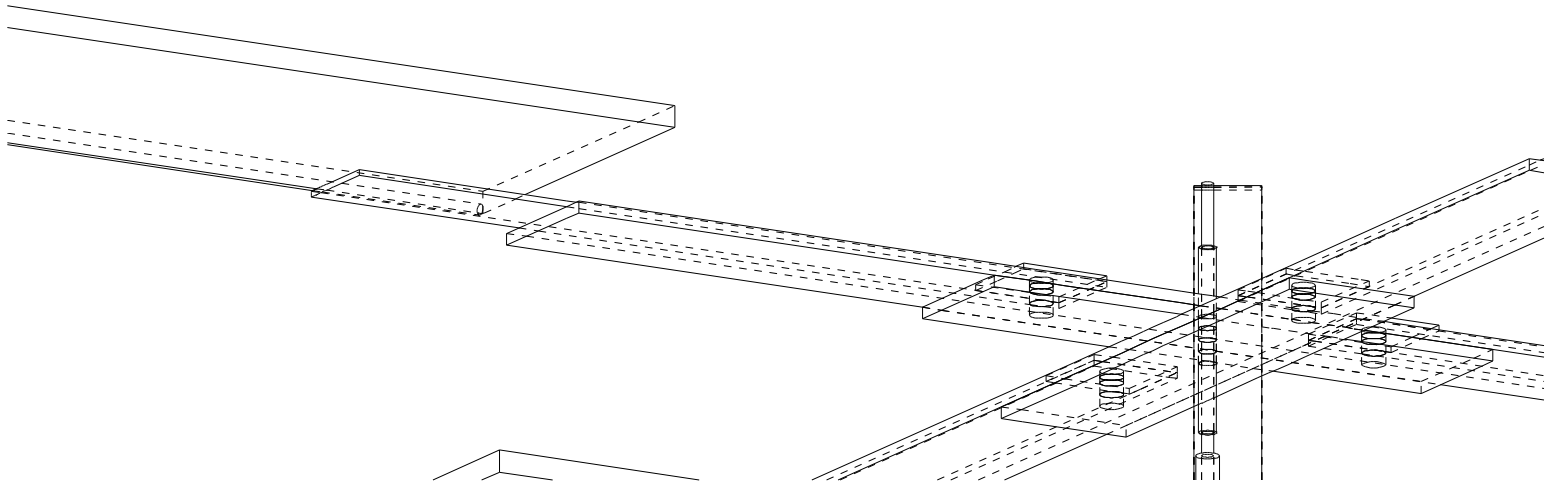
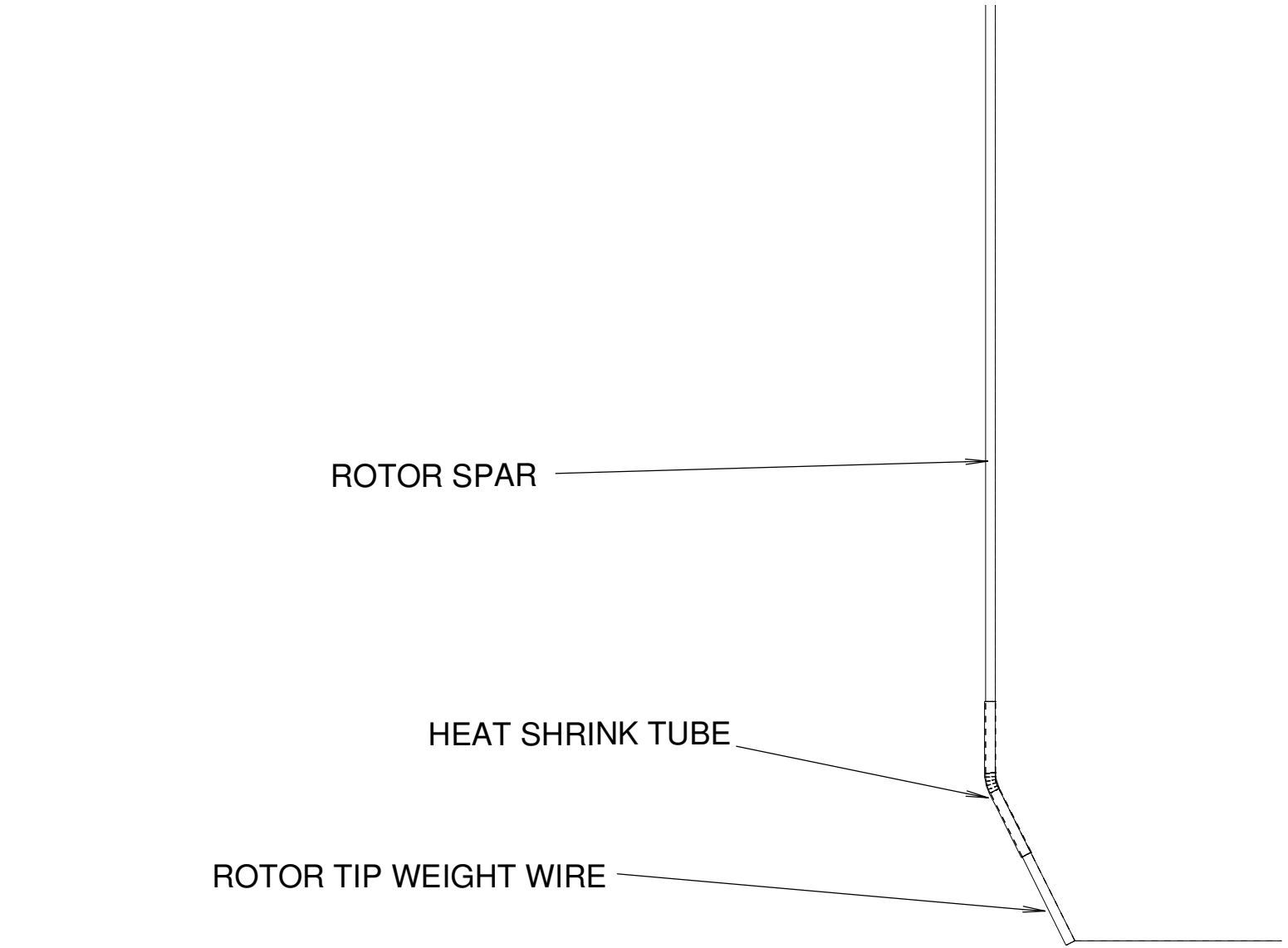
INCH SCALE

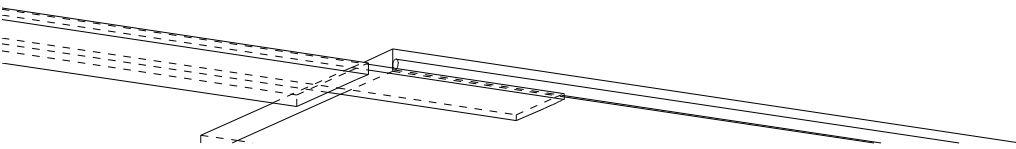
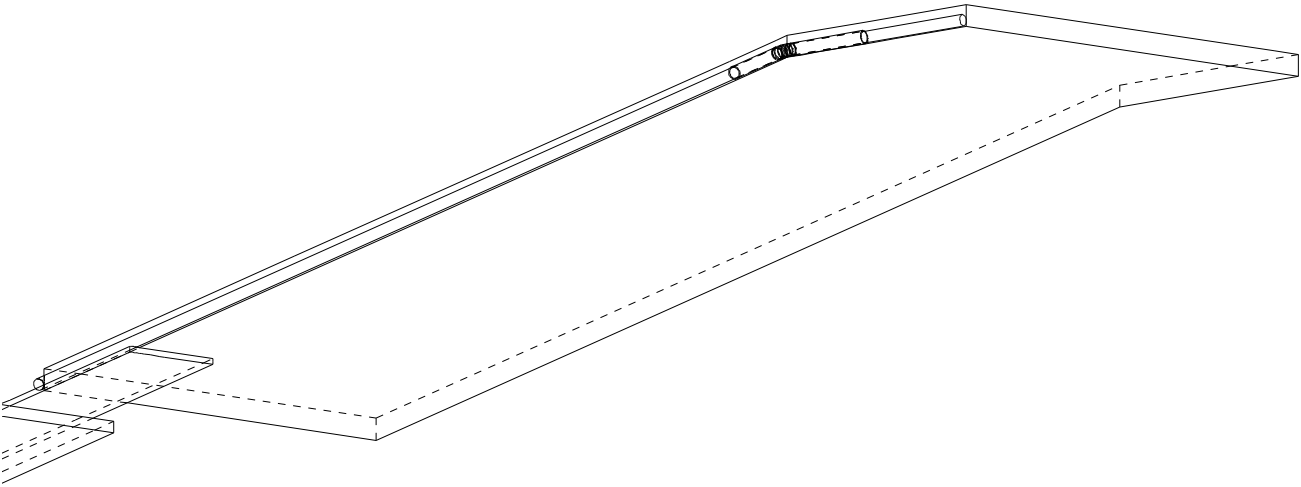
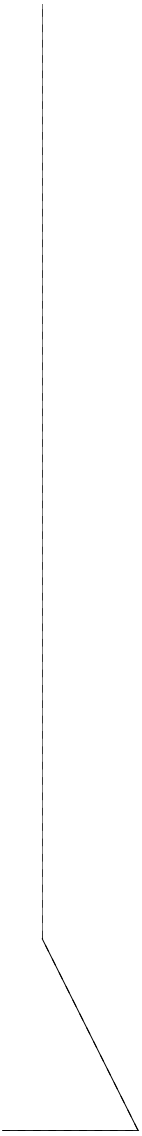


ROTOR SPAR

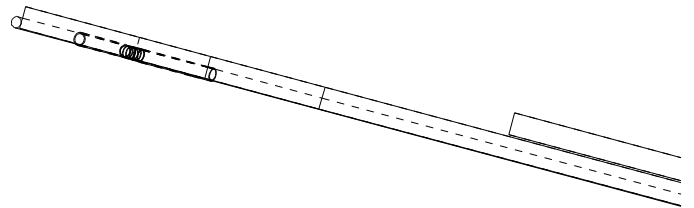
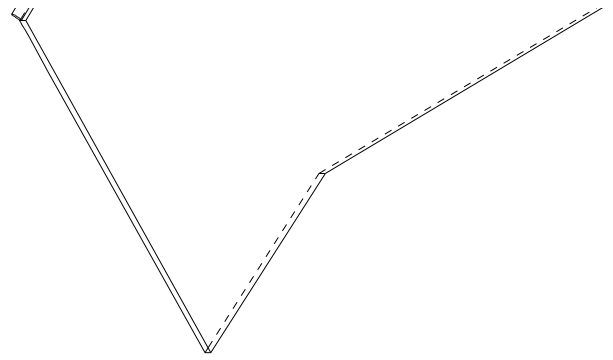
HEAT SHRINK TUBE

ROTOR TIP WEIGHT WIRE

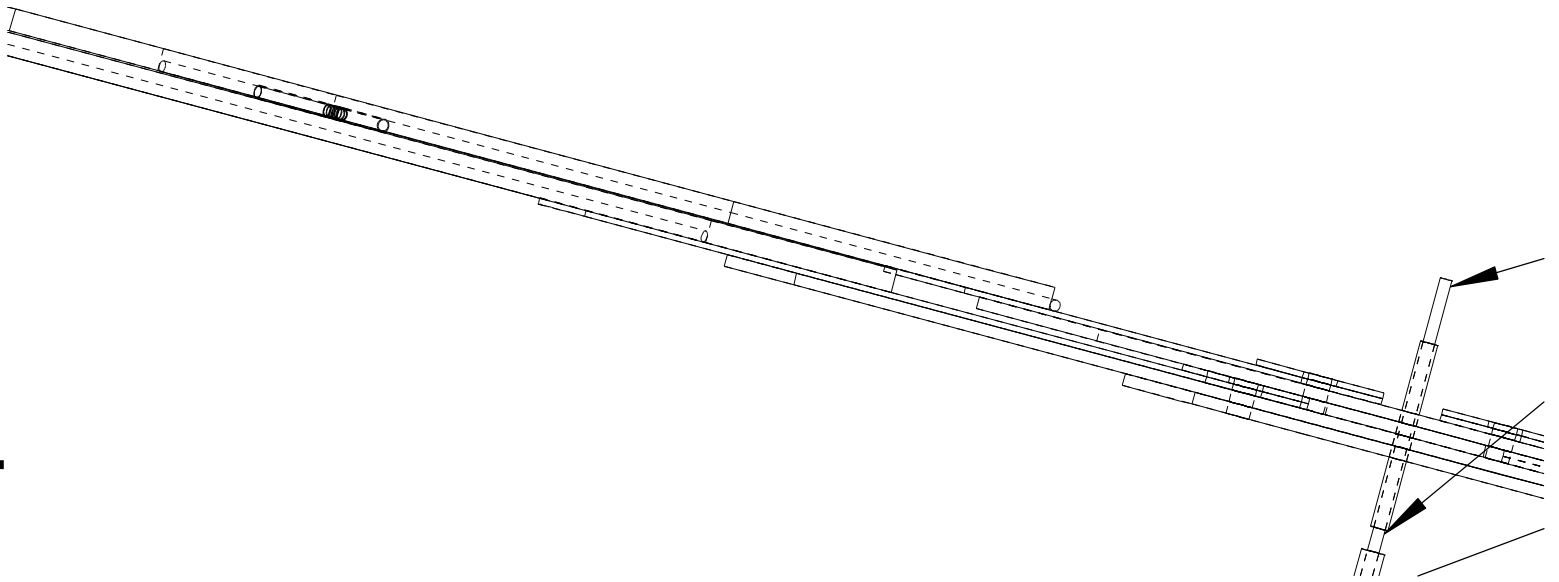
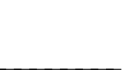




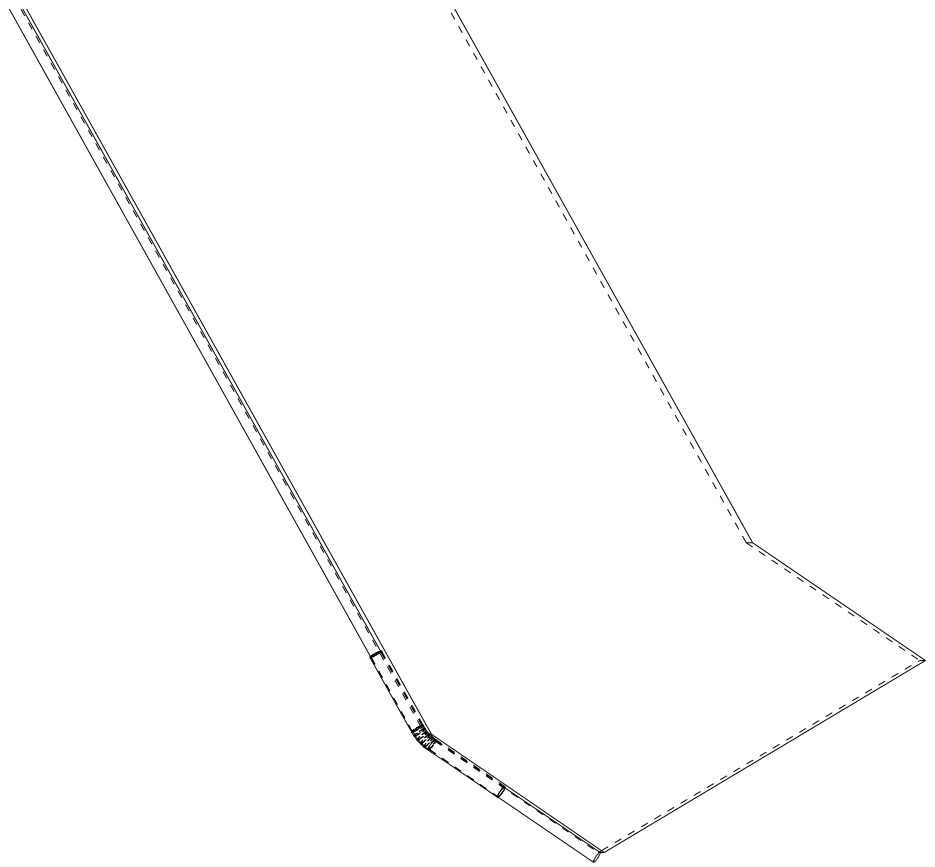
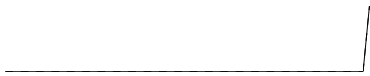
N
R
T



**NOTE: ADJUST ELEVATOR AND OR
RUDDER SERVO POSITION TO GET
THE CORRECT CENTER OF GRAVITY.**

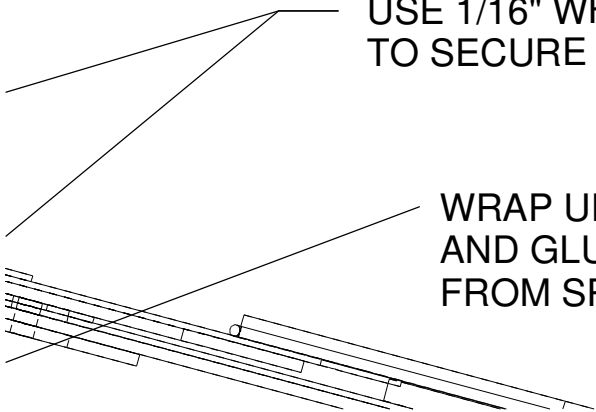


Y.



USE 1/16" WHEEL COLLAR ABOVE AND BELOW
TO SECURE ROTOR ASSEMBLY TO MAST

WRAP UPPER END OF CF TUBE WITH THREAD
AND GLUE WITH CA. THIS KEEPS THE TUBE
FROM SPLITTING.



Materials:

Airframe 9mm 1.3 lb epp, 3mm carbon tubes

Rotor 3mm Depron, 1.5mm carbon rod, heat shrink tube, 1/16 music wire.

Hub: 3/32 brass tubing, 1/32 and 1/16 ply.

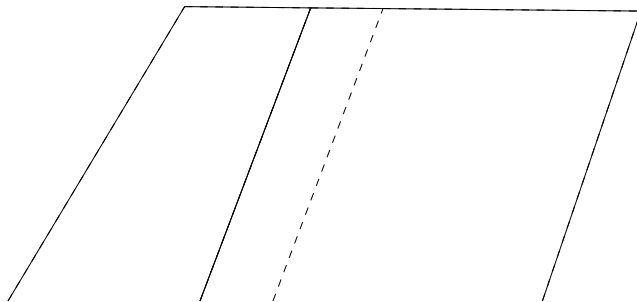
Motor Turnigy 2730-1500, 8043 prop

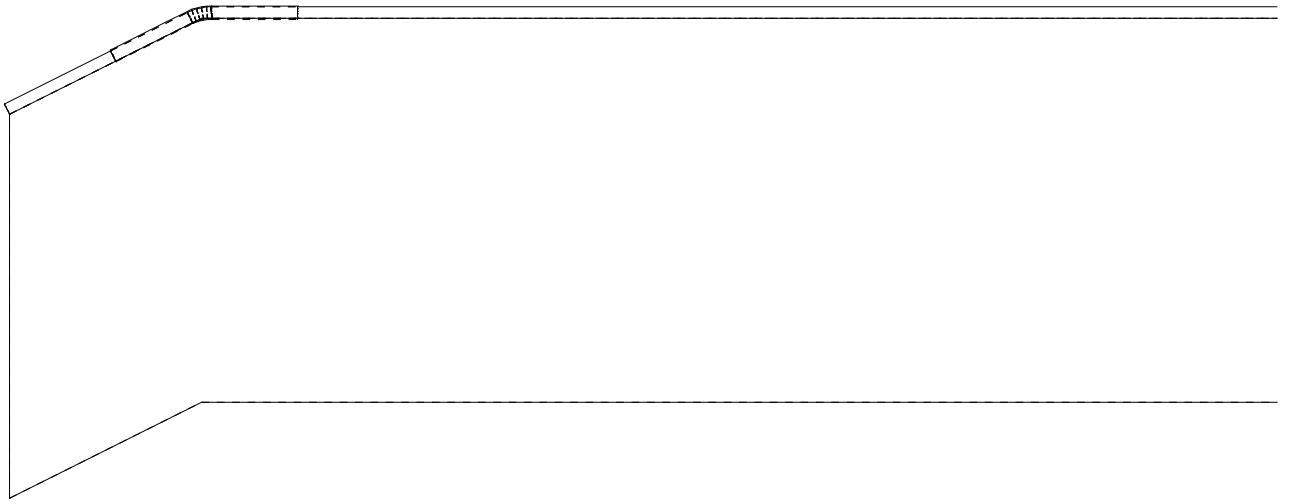
Plastic motor stick

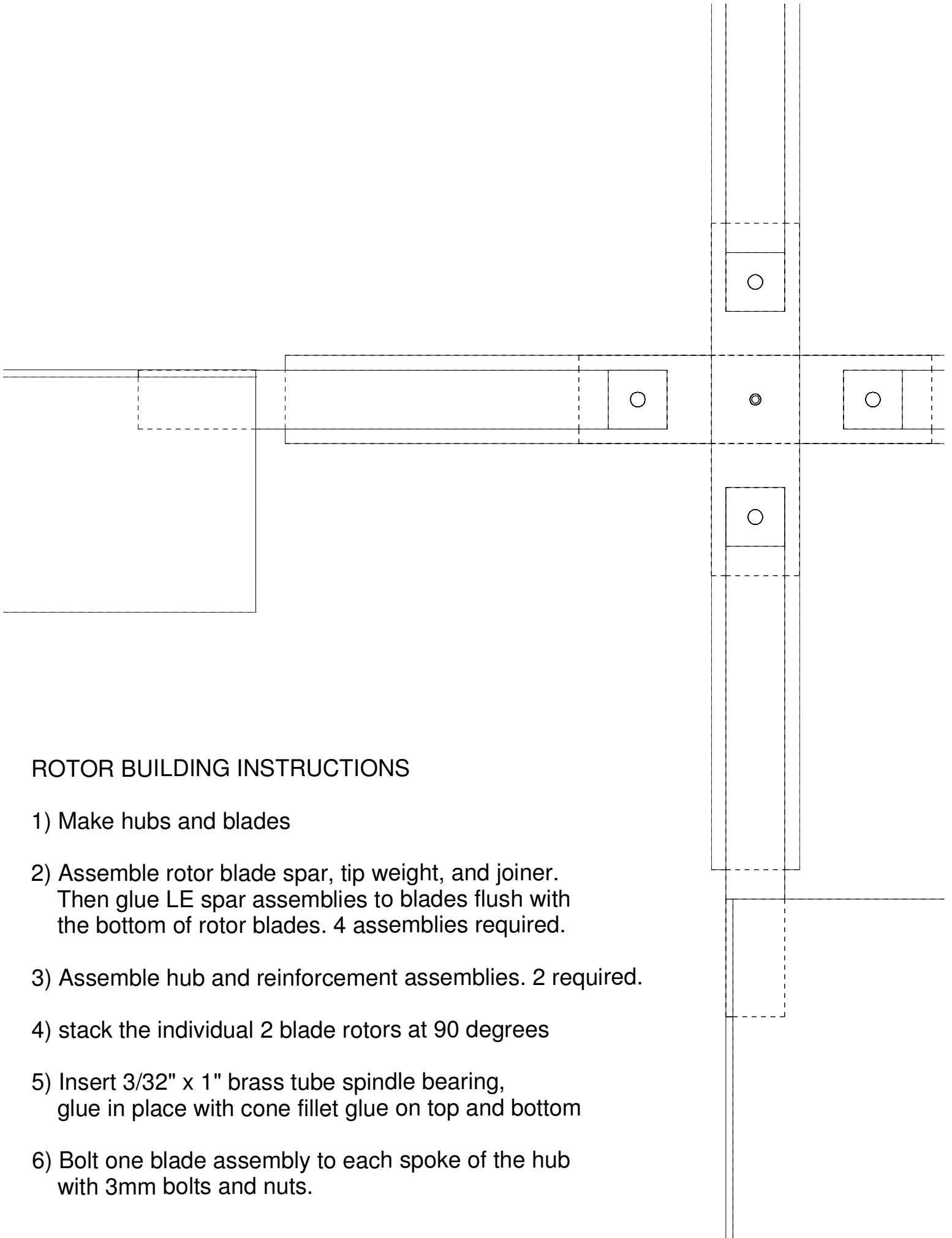
Servos 3 of HXT 500

Battery 3s - 360 mAh Rhino

Mystery 12 A esc







ROTOR BUILDING INSTRUCTIONS

- 1) Make hubs and blades
- 2) Assemble rotor blade spar, tip weight, and joiner.
Then glue LE spar assemblies to blades flush with the bottom of rotor blades. 4 assemblies required.
- 3) Assemble hub and reinforcement assemblies. 2 required.
- 4) stack the individual 2 blade rotors at 90 degrees
- 5) Insert $3/32$ " x 1" brass tube spindle bearing,
glue in place with cone fillet glue on top and bottom
- 6) Bolt one blade assembly to each spoke of the hub
with 3mm bolts and nuts.

