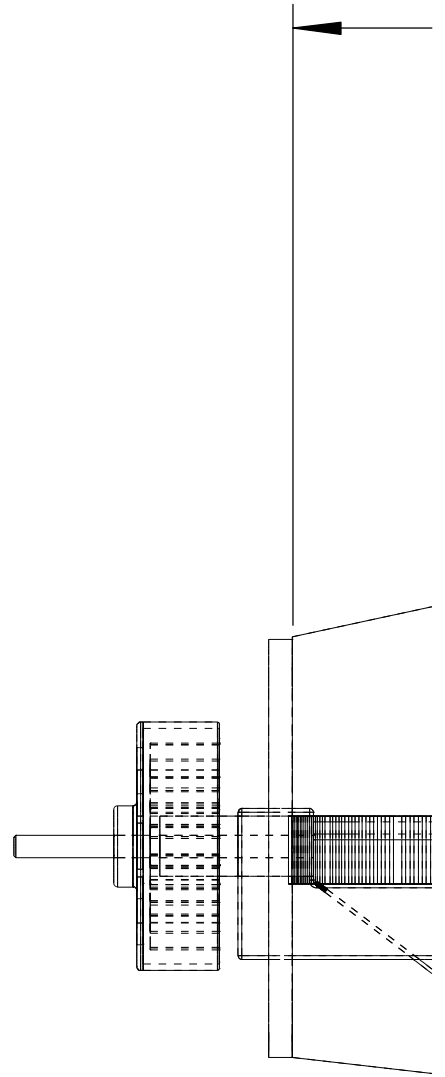
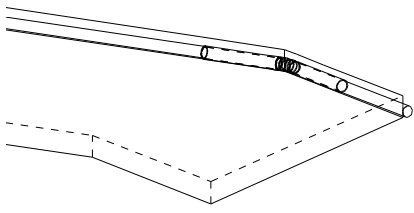
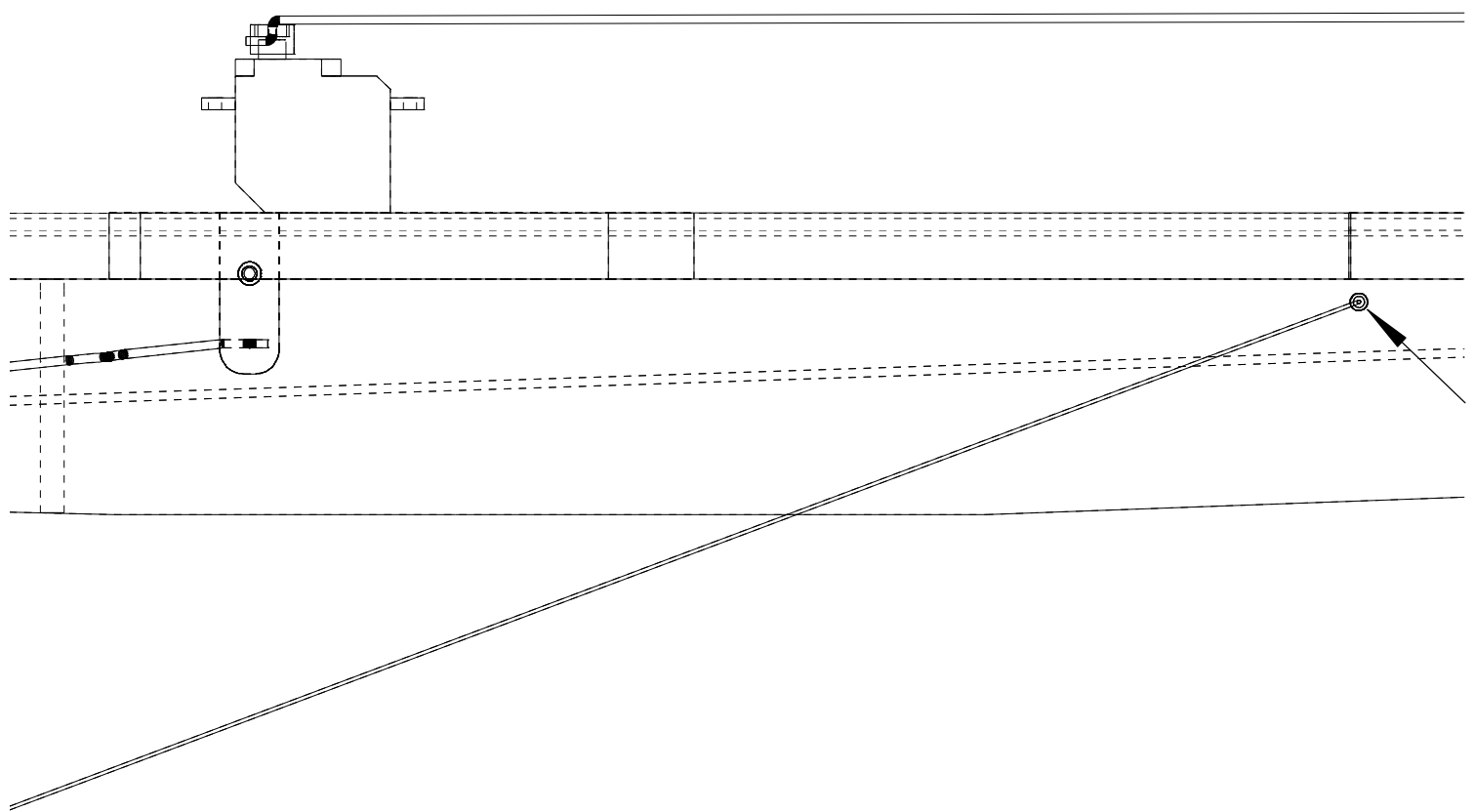
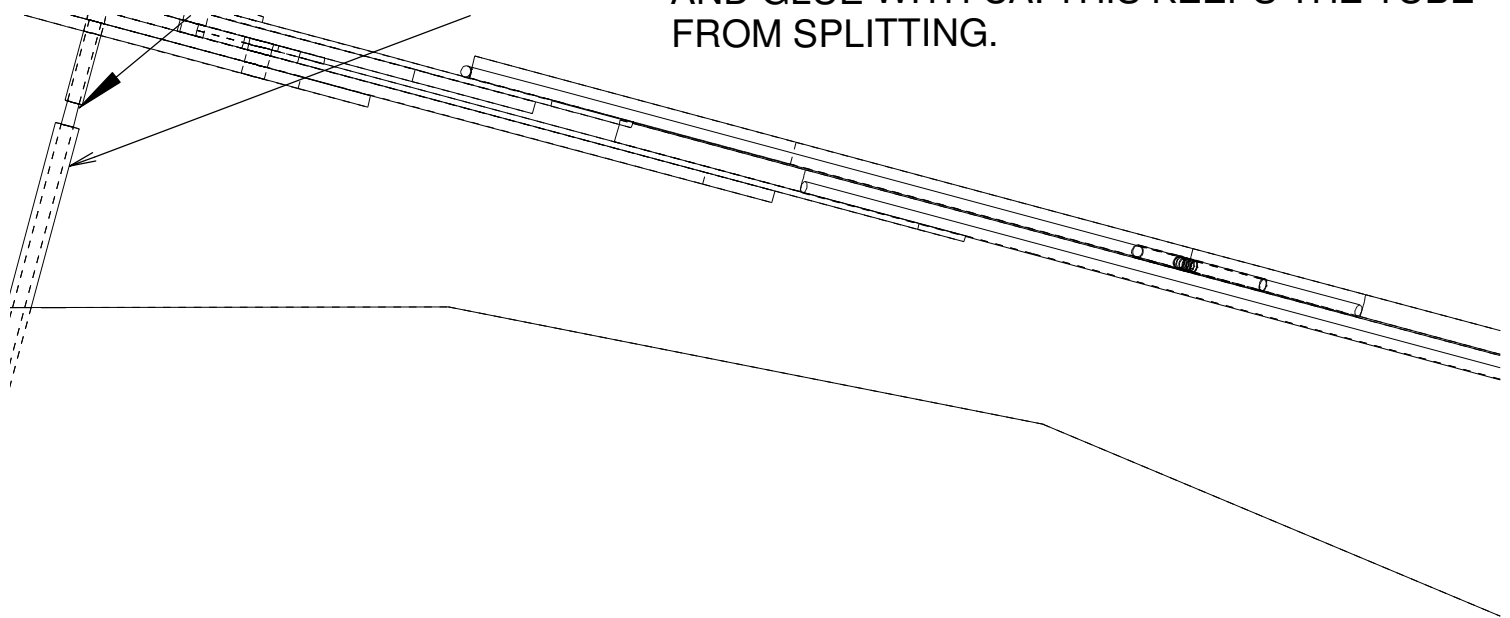


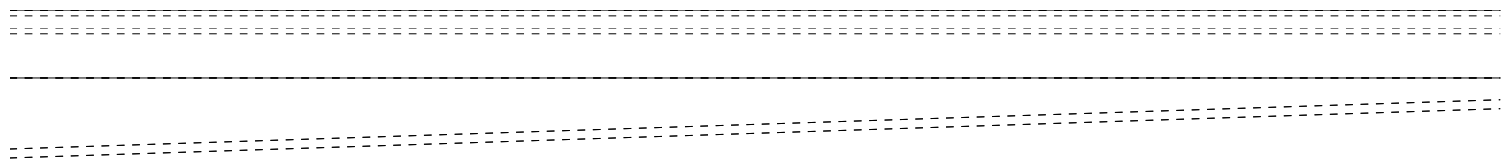
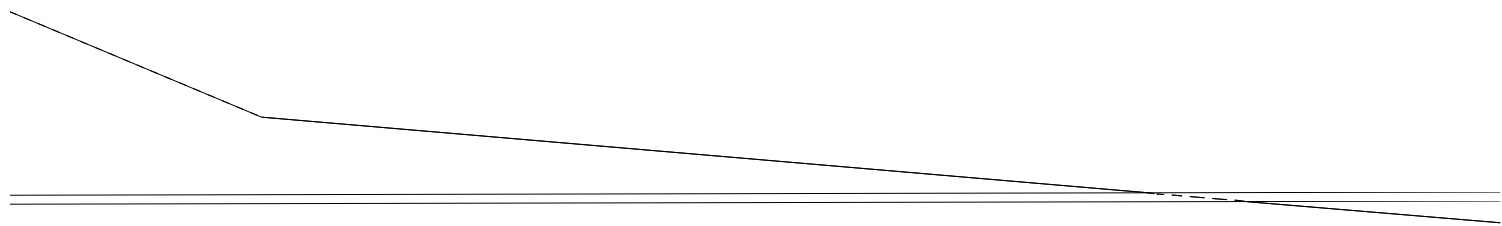
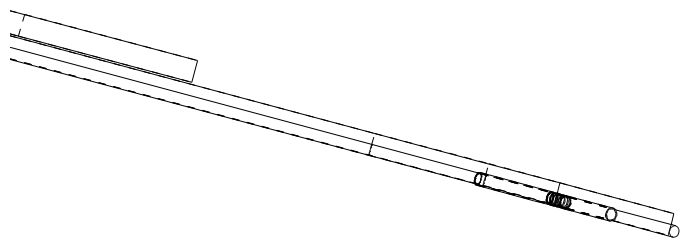
THE CORRECT CENTER OF GRAVITY



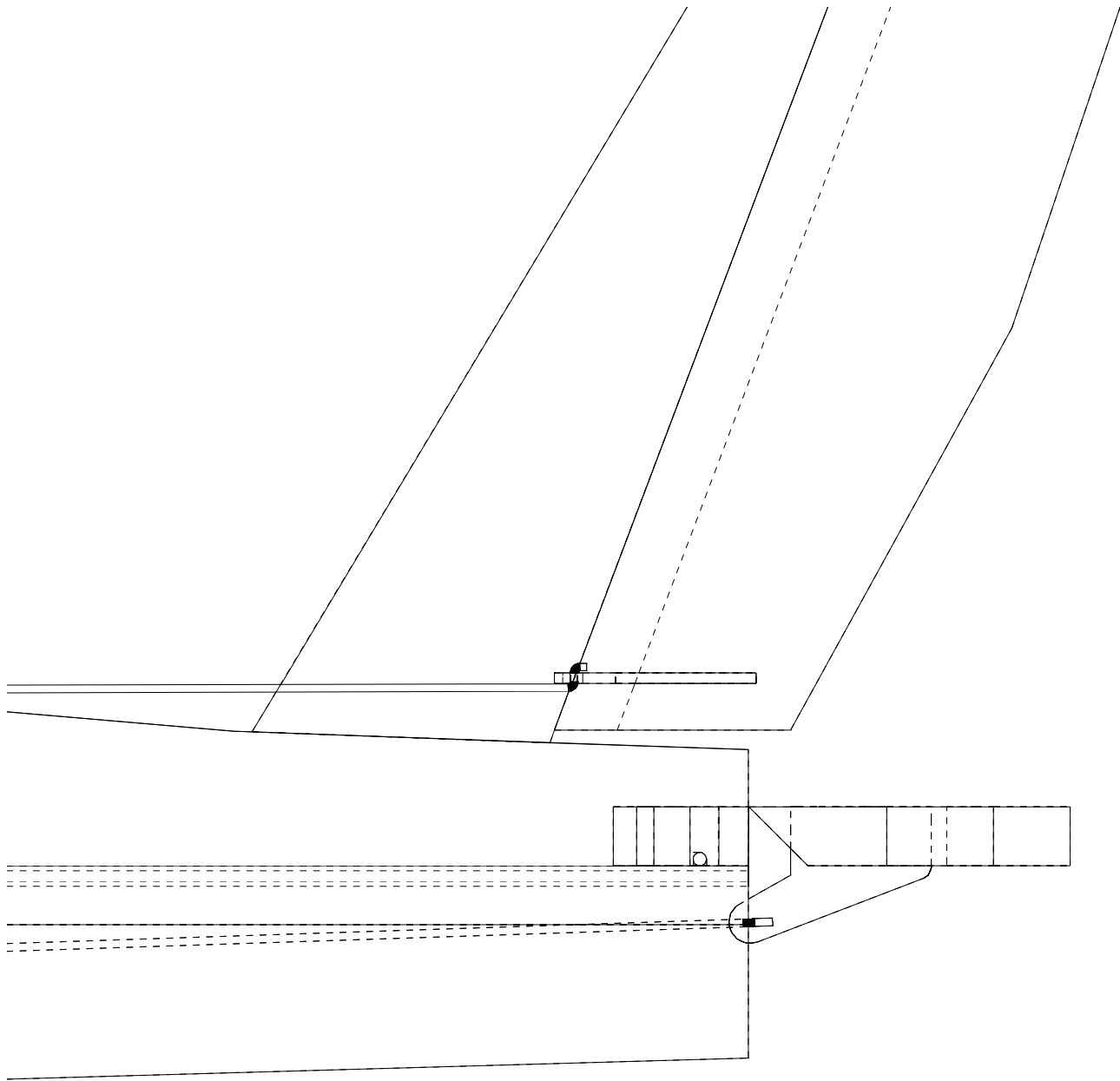
PROP SAVER O-RING ———
ACTS AS SHOCK ABSORBER

AND GLUE WITH CA. THIS KEEPS THE TUBE FROM SPLITTING.





SMALL PLASTIC TUBE IN FOAM TO
SERVE AS ANCHOR POINT FOR
LANDING GEAR RETENTION THREAD



APACHE AG-64

DESIGNED BY LEADFEATHER

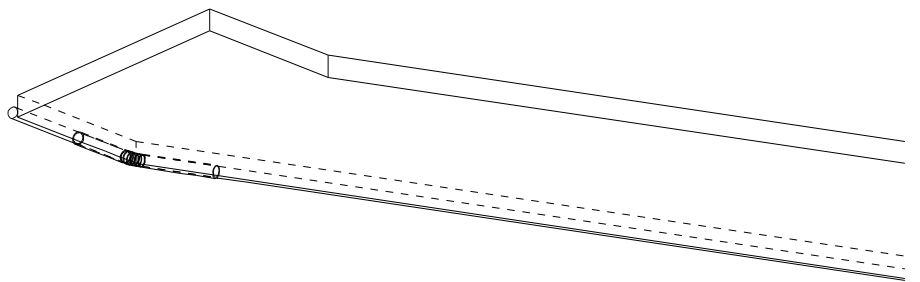
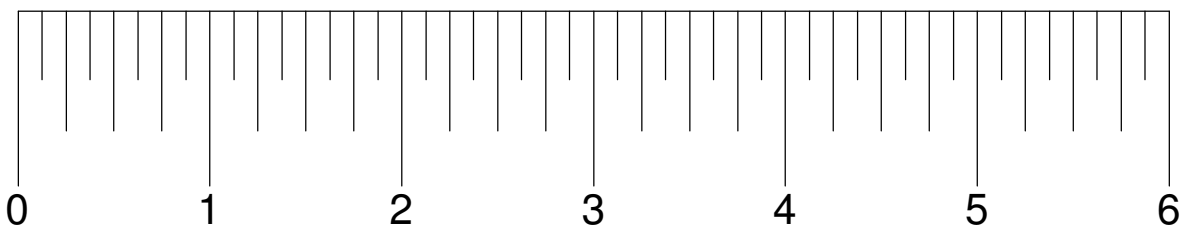
CAD BY DZISFB

COMMERCIAL RIGHTS RESERVED 24-JAN-2010

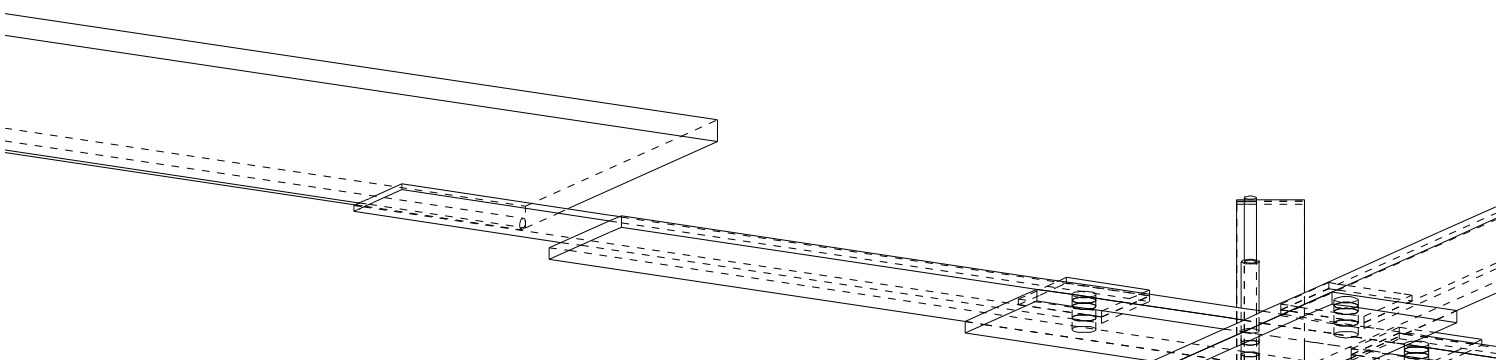
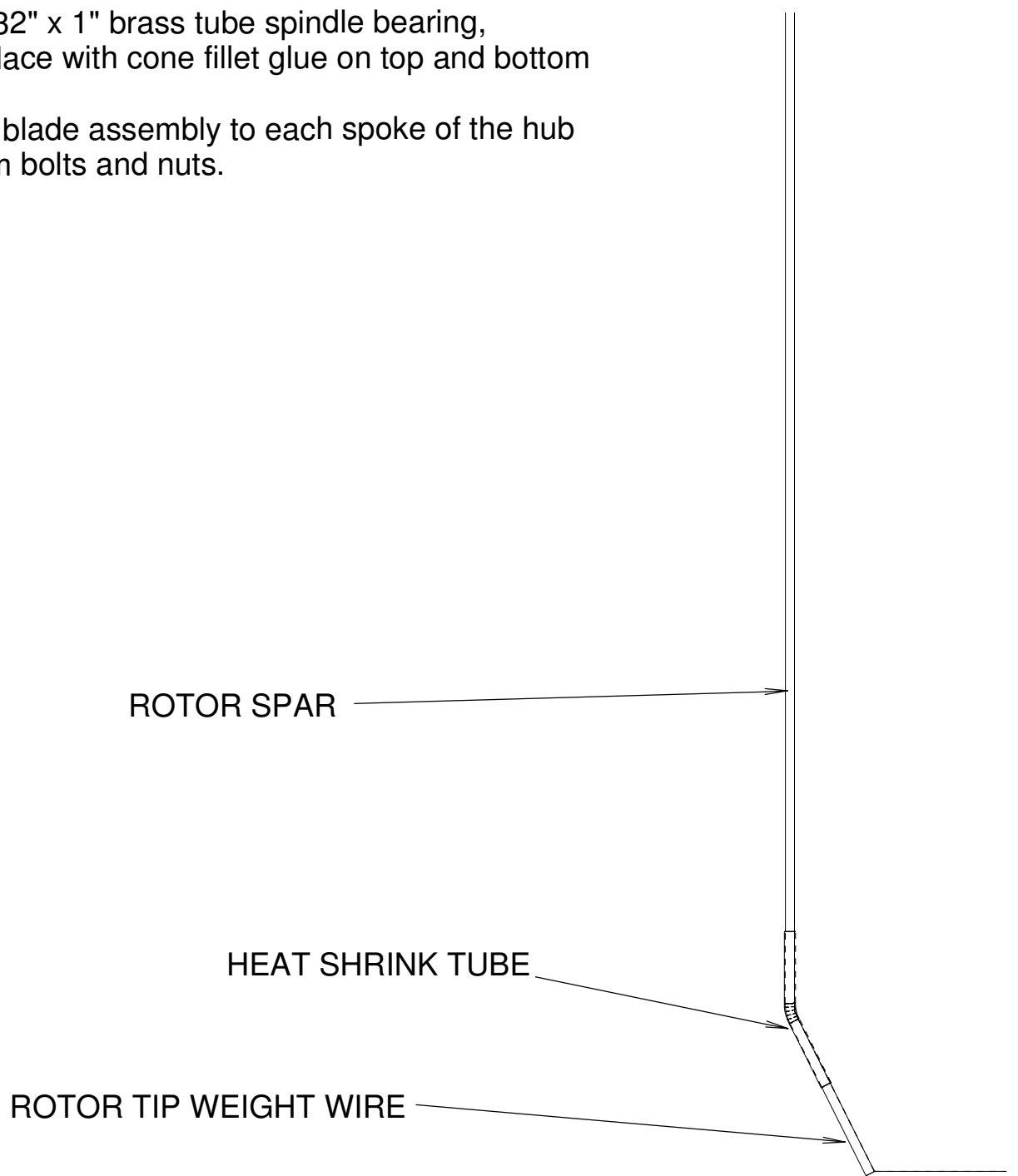
CHANGE A 21-FE-2010	UPGRADED ROTOR. MOVED CENTER OR GRAVITY FORWARD 1/4". SHOWED DETAILS FOR 4 CHANNEL P MOVED LANDING GEAR FORWARD 1/2".

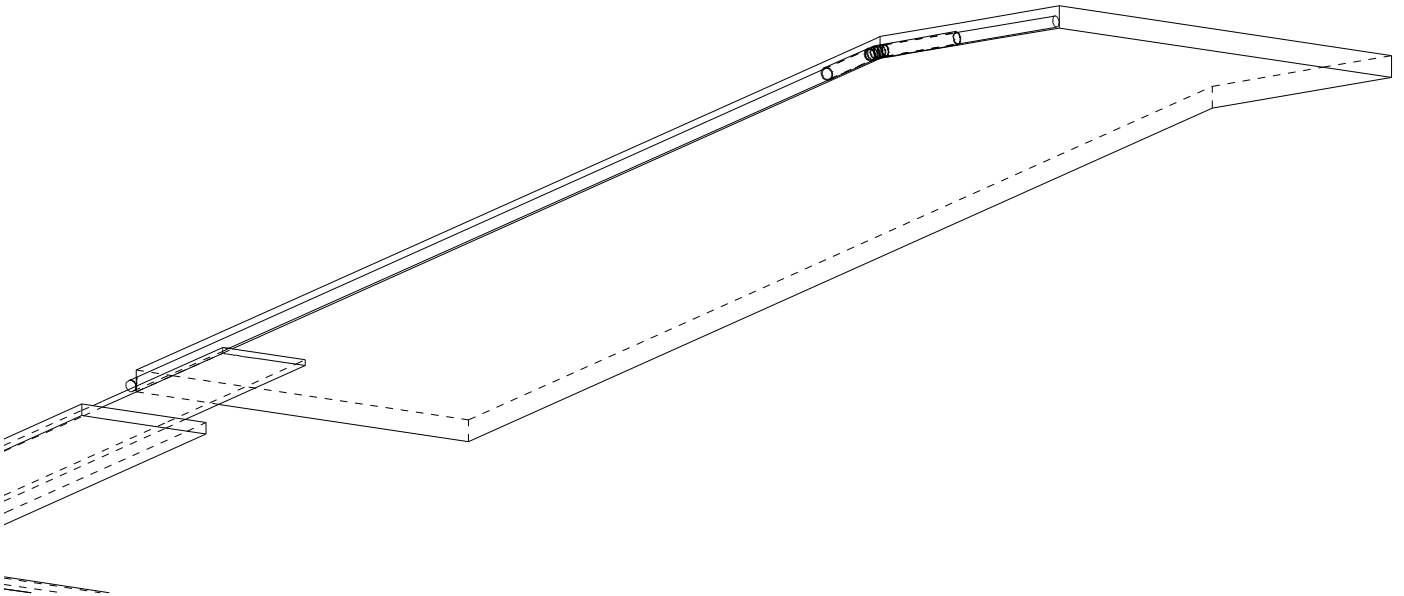
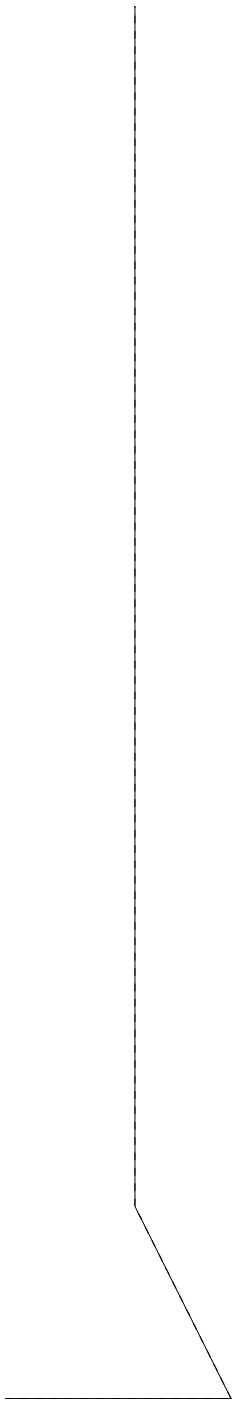
TY
NEL PRO MOD.

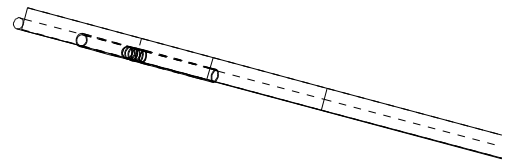
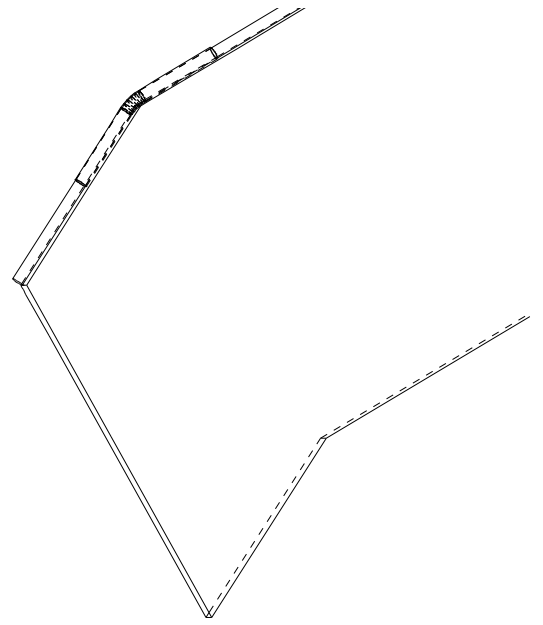
INCH SCALE



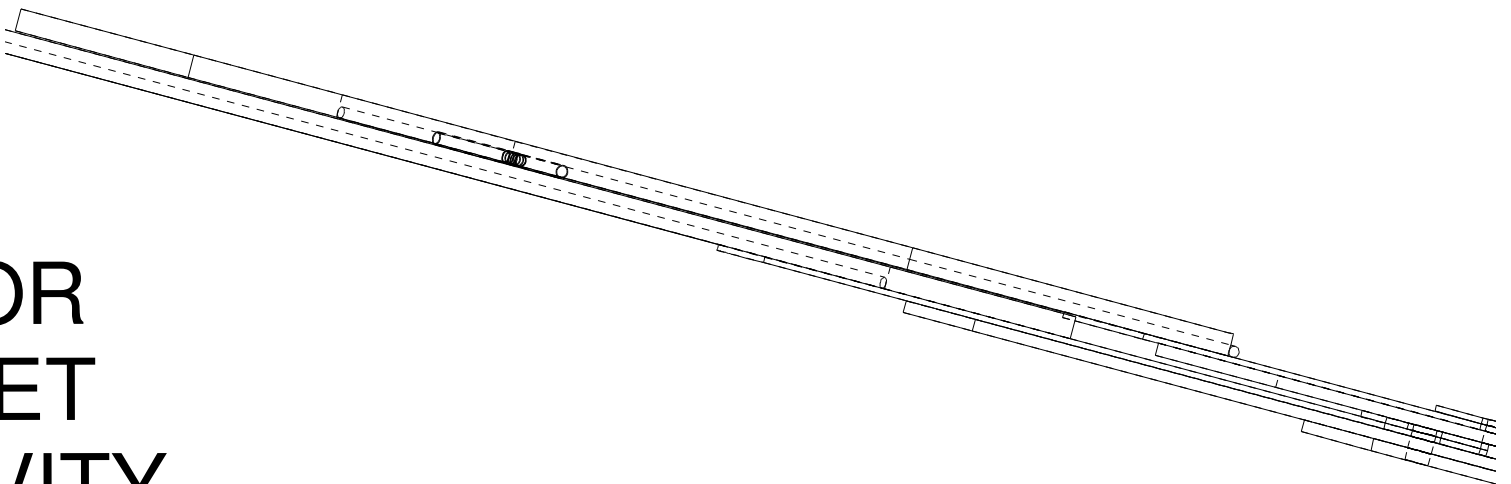
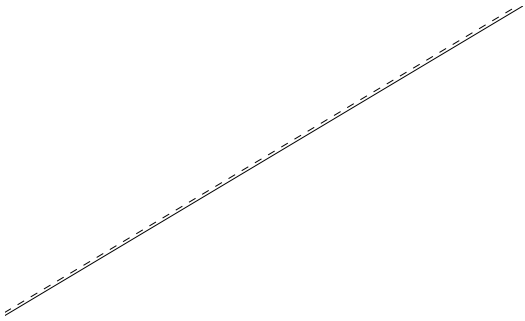
- 5) Insert 3/32" x 1" brass tube spindle bearing, glue in place with cone fillet glue on top and bottom
- 6) Bolt one blade assembly to each spoke of the hub with 3mm bolts and nuts.



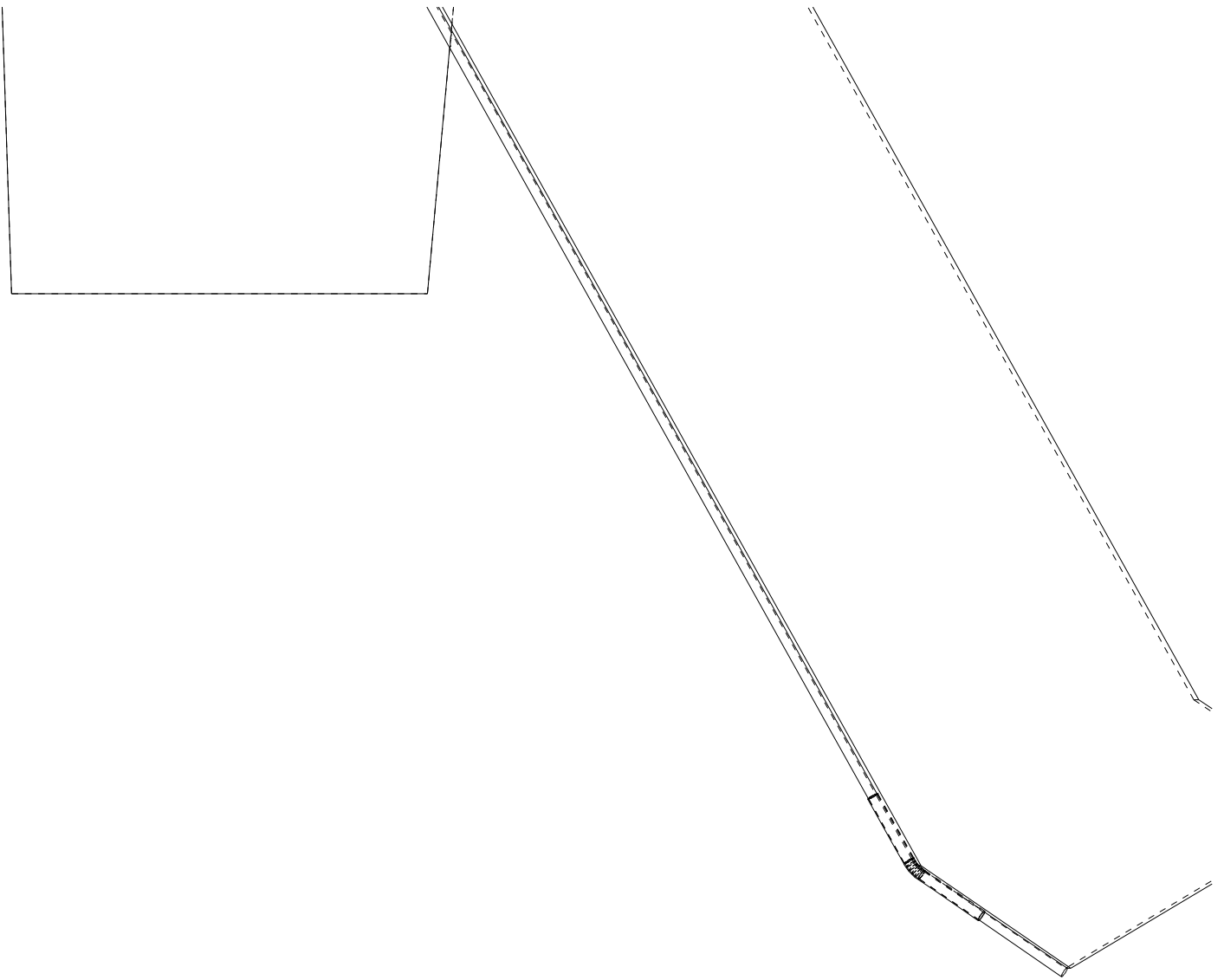




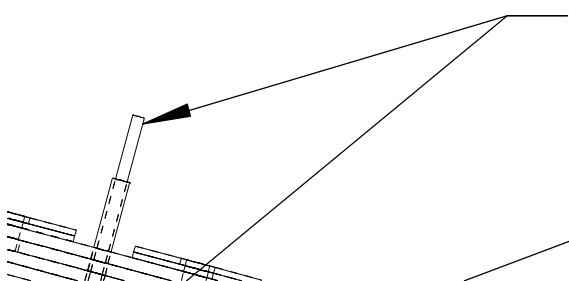
NOTE: ADJUST ELEVATOR AND OF
RUDDER SERVO POSITION TO GET
THE CORRECT CENTER OF GRAVI



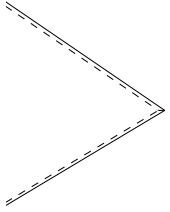
OR
GET
AVITY.



USE 1/16" WHEEL COLLAR ABOVE AND BELOW
TO SECURE ROTOR ASSEMBLY TO MAST



WRAP UPPER END OF CF TUBE WITH THREAD
AND GLUE WITH CA. THIS KEEPS THE TUBE
FROM SPLITTING.



Materials:

Airframe 9mm 1.3 lb epp, 3mm carbon tube

Rotor 3mm Depron, 1.5mm carbon rod, heat shrink tube, 1/16 music wire.

Hub: 3/32 brass tubing, 1/32 and 1/16 ply.

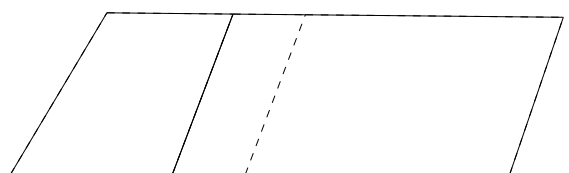
Motor Turnigy 2730-1500, 8043 prop

Plastic motor stick

Servos 3 of HXT 500

Battery 3s - 360 mAh Rhino

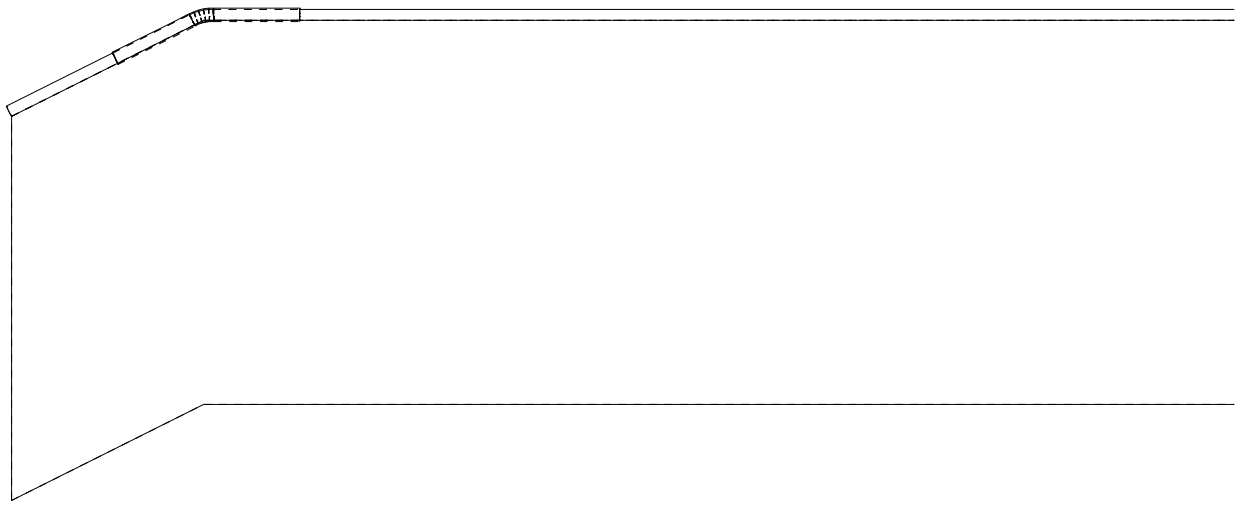
Mystery 12 A esc

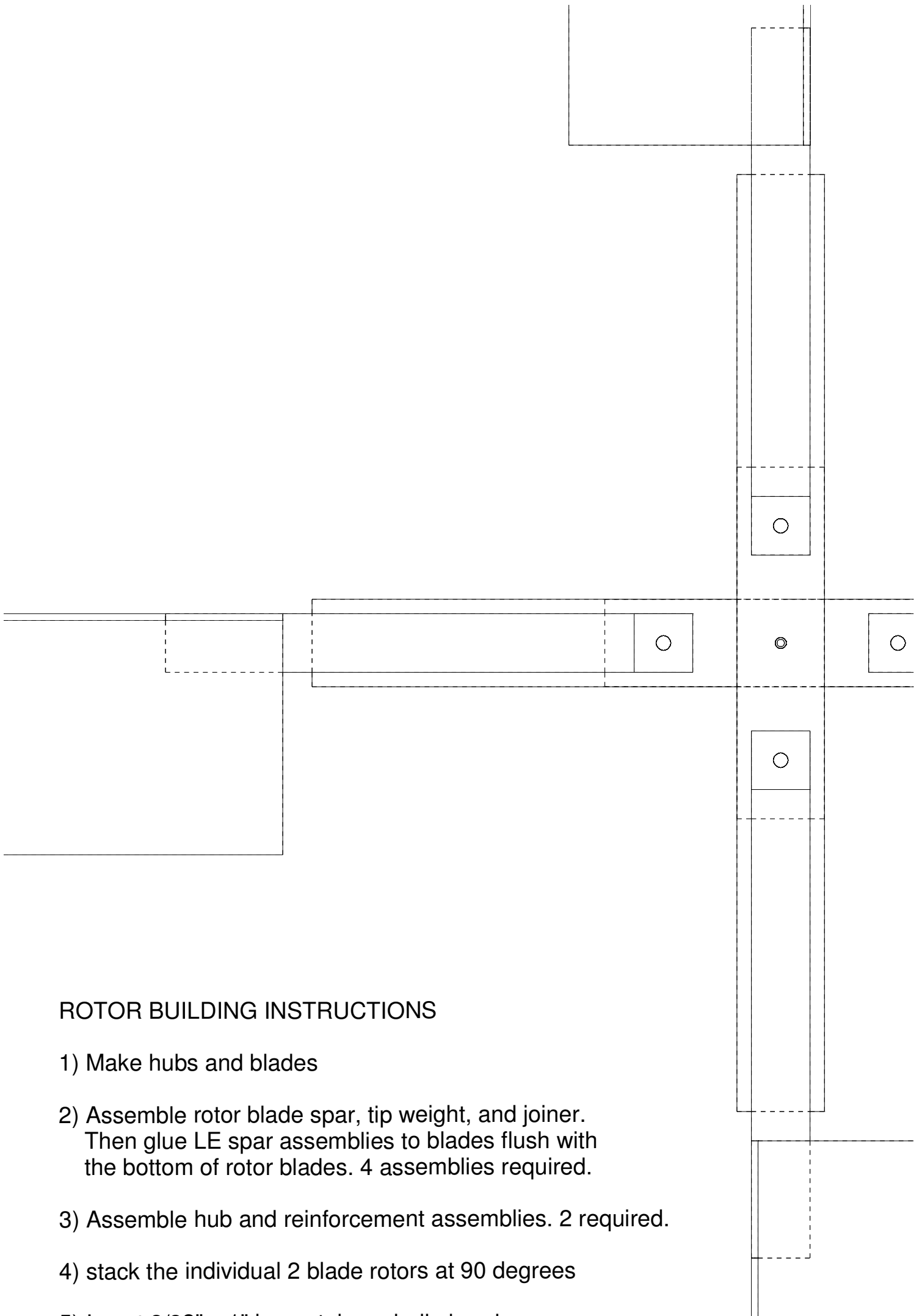


ubes

heat

y.





ROTOR BUILDING INSTRUCTIONS

- 1) Make hubs and blades
- 2) Assemble rotor blade spar, tip weight, and joiner.
Then glue LE spar assemblies to blades flush with the bottom of rotor blades. 4 assemblies required.
- 3) Assemble hub and reinforcement assemblies. 2 required.
- 4) stack the individual 2 blade rotors at 90 degrees
- 5) Insert 3/32" x 1" brass tube spindle bearing,
glue in place with cone fillet glue on top and bottom

