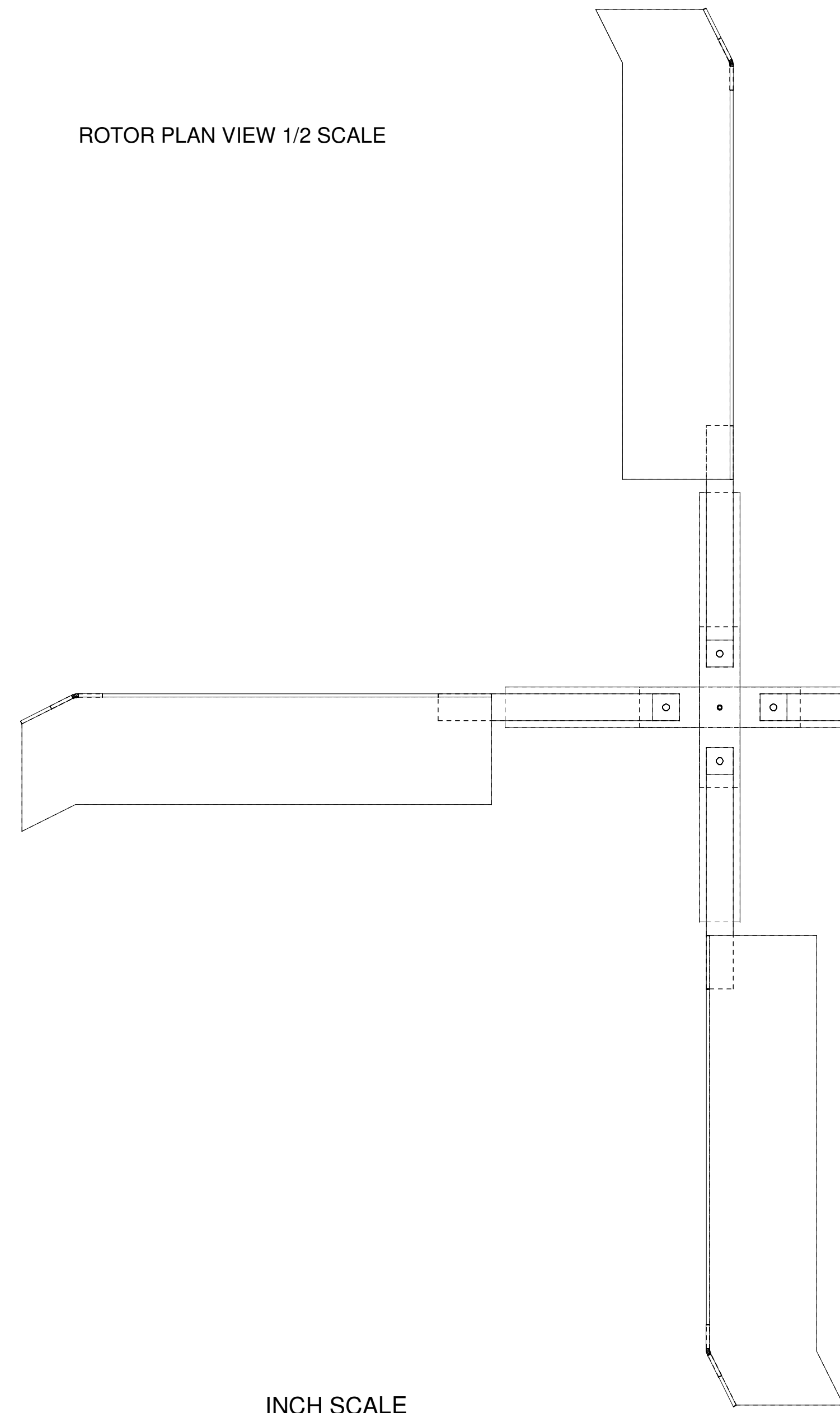
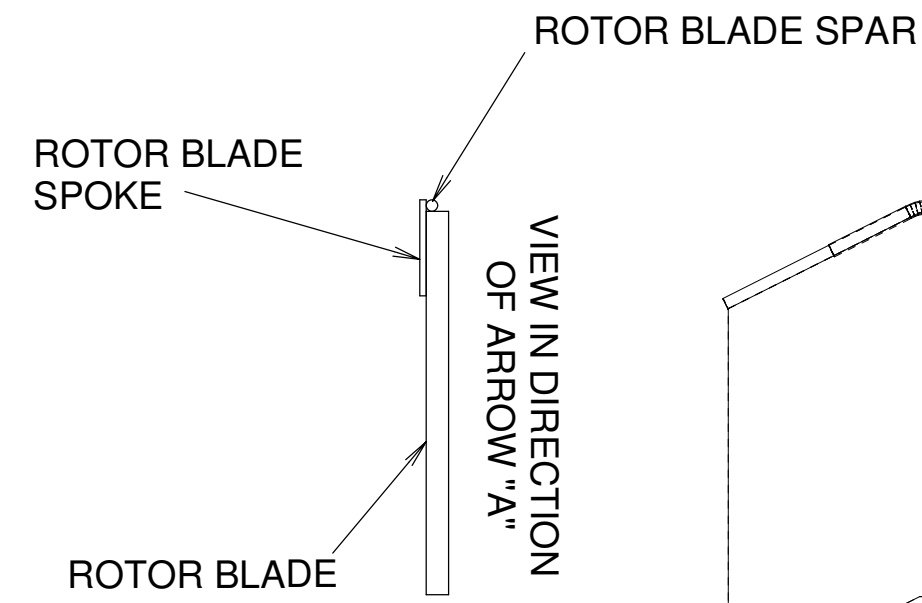


ROTOR PLAN VIEW 1/2 SCALE

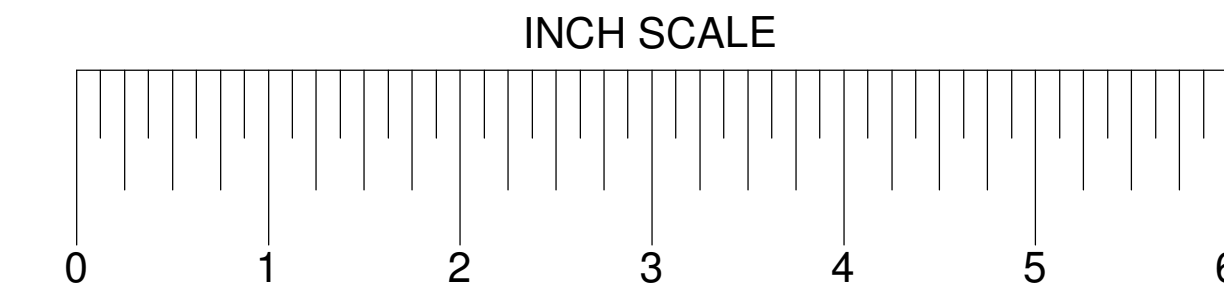
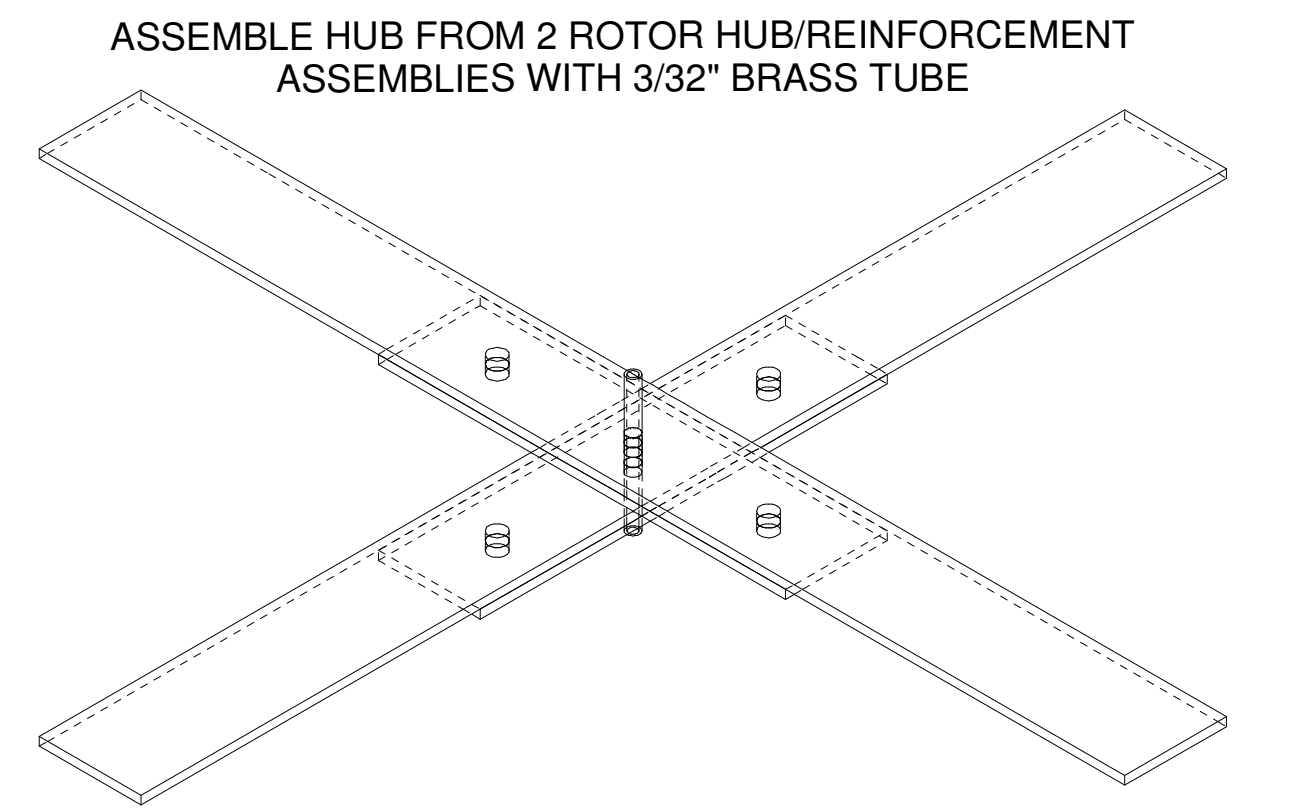
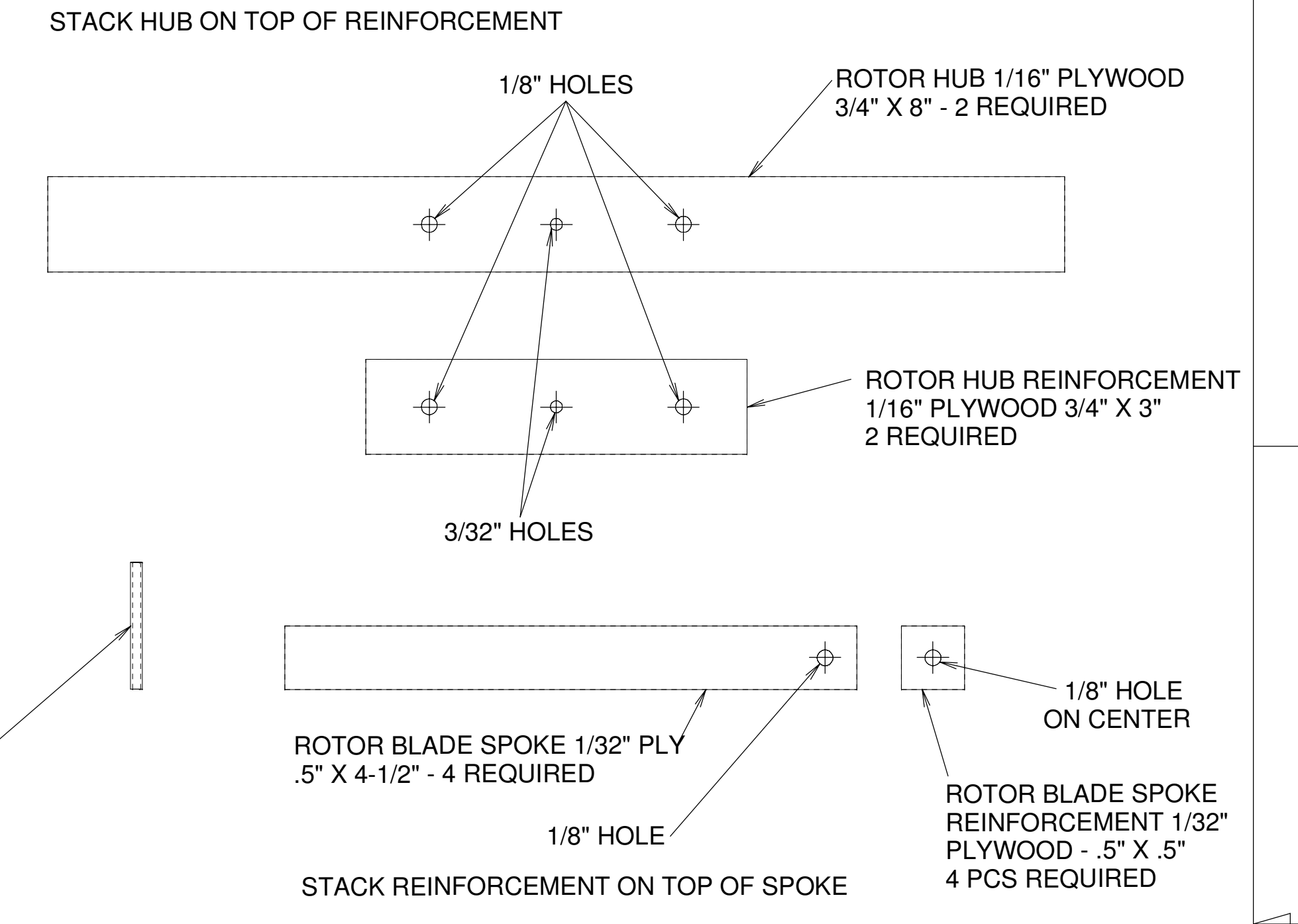
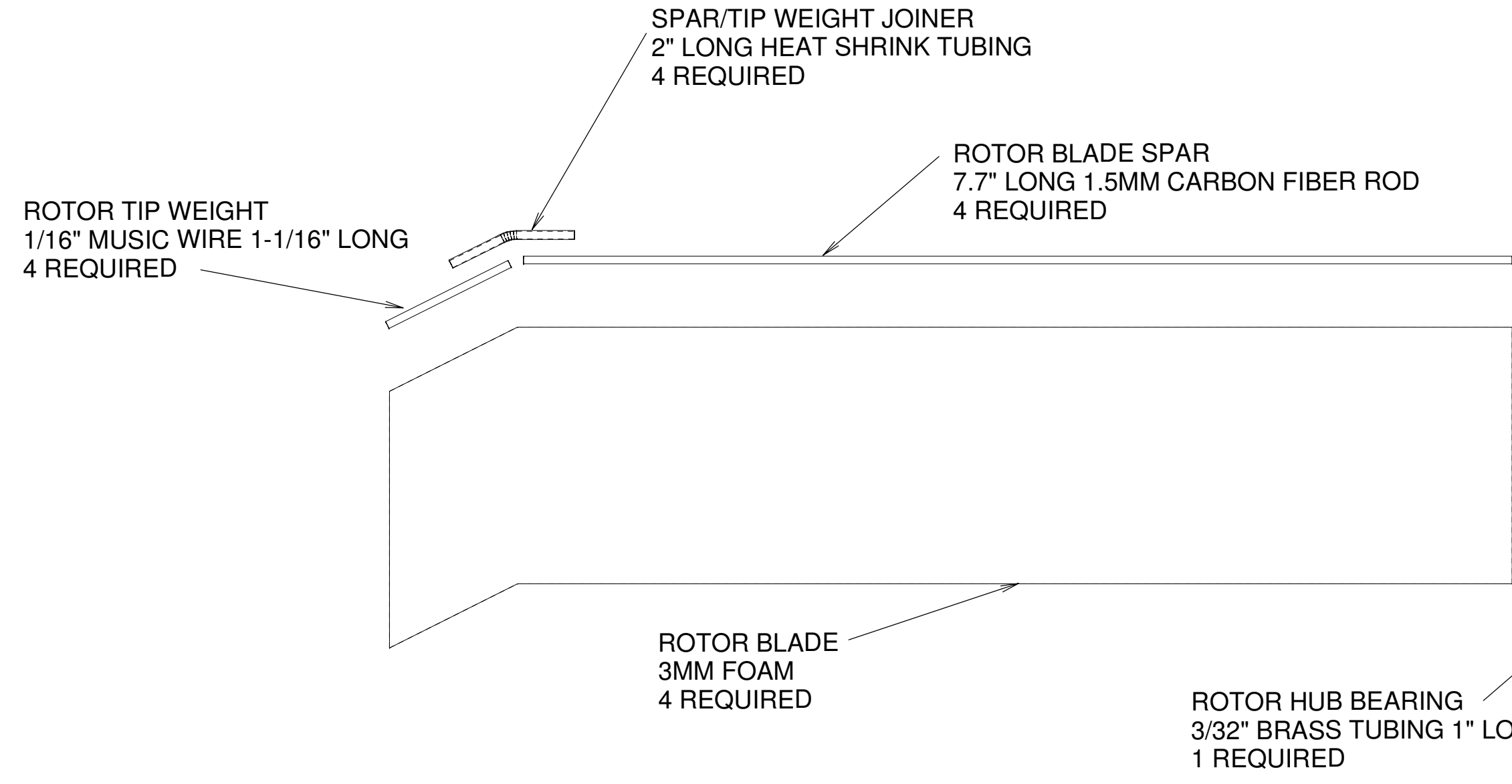
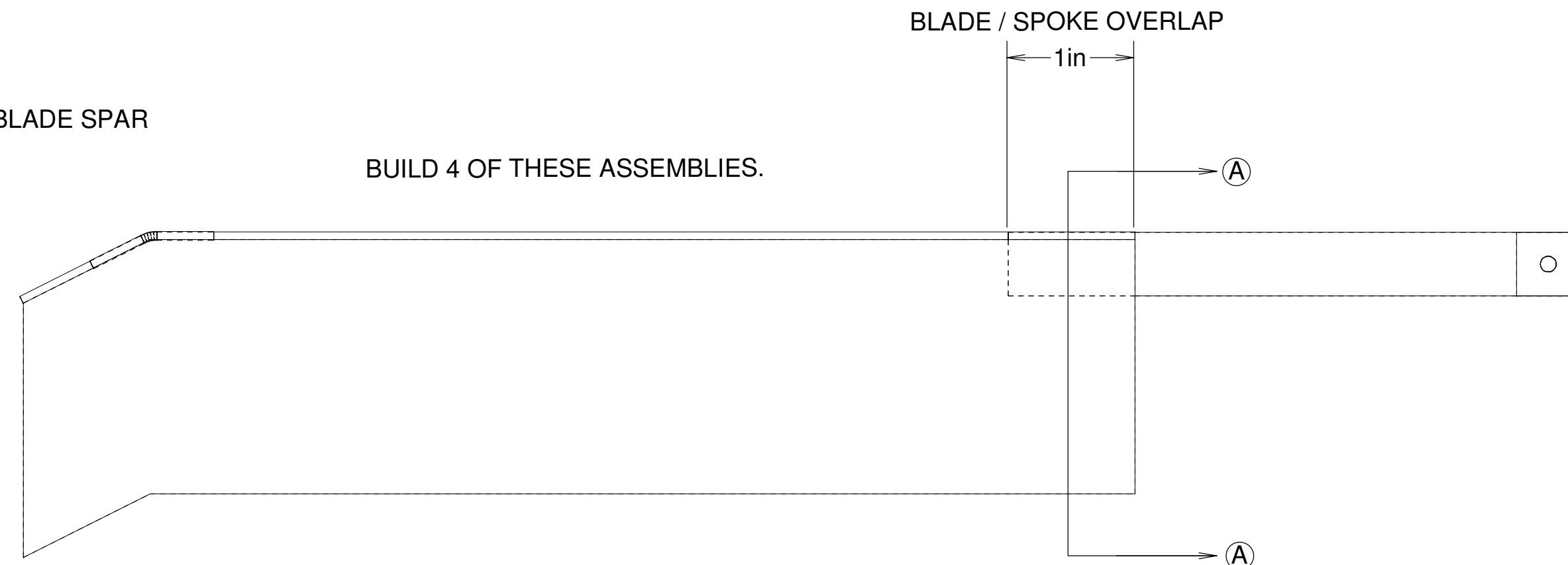


ROTOR BUILDING INSTRUCTIONS

- 1) Make hubs and blades
- 2) Assemble rotor blade spar, tip weight, and joiner. Then glue LE spar assemblies to blades flush with the bottom of rotor blades. 4 assemblies required.
- 3) Assemble hub and reinforcement assemblies. 2 required.
- 4) stack the individual 2 blade rotors at 90 degrees
- 5) Insert 3/32" x 1" brass tube spindle bearing, glue in place with cone fillet glue on top and bottom
- 6) Bolt one blade assembly to each spoke of the hub with 3mm bolts and nuts.



BUILD 4 OF THESE ASSEMBLIES.



DESIGNED BY LEADFEATHER		APACHE AG-64 ROTOR ASSEMBLY		
CAD BY DZISFB		COMMERCIAL RIGHTS RESERVED 21-FEB-2010		
SIZE	CAGE CODE	DWG NO	REV	
C				
SCALE			SHEET	