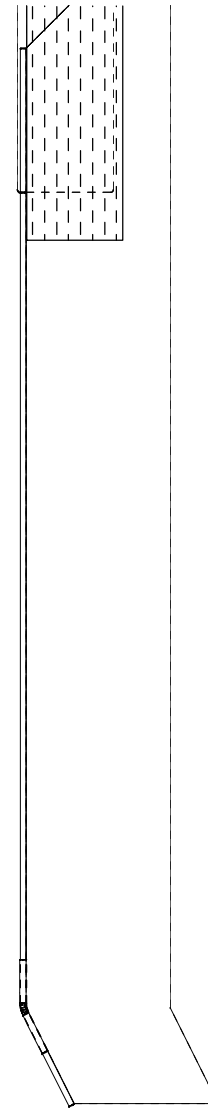


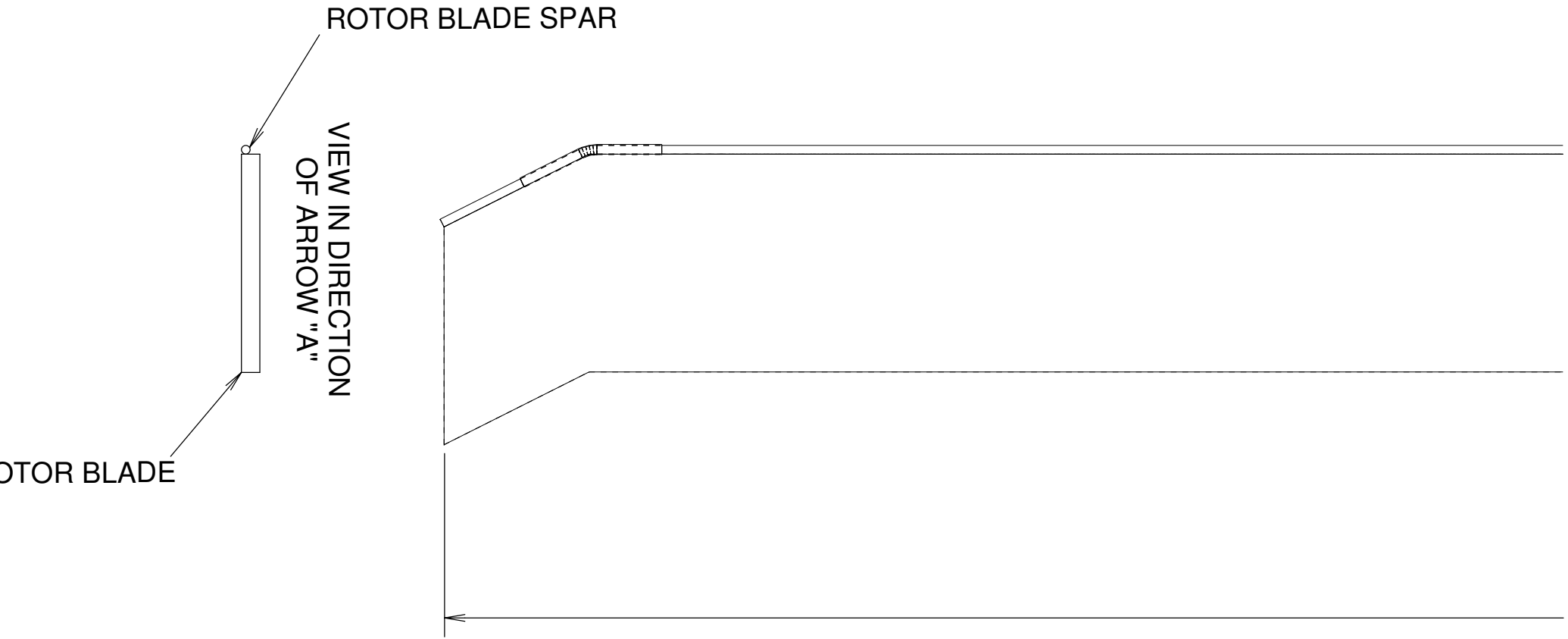
SPECIAL NOTE:
ADD FLAPPING LIMITER PLATES
AS THE LAST PART TO THIS
ASSEMBLY

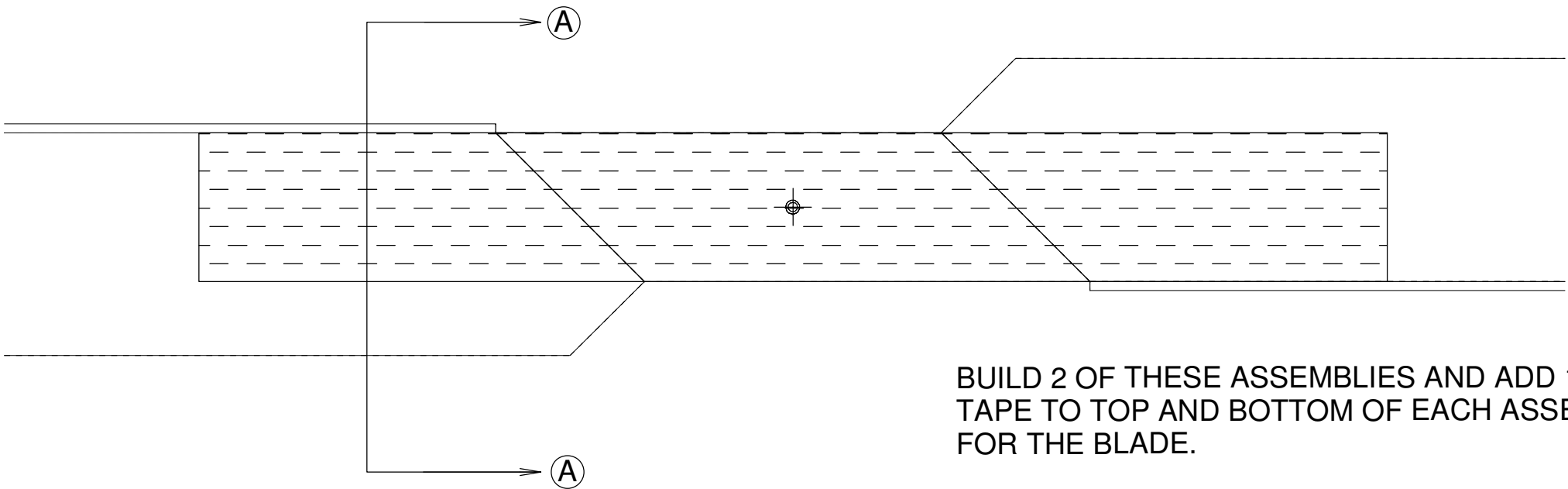
B

A



ROTOR



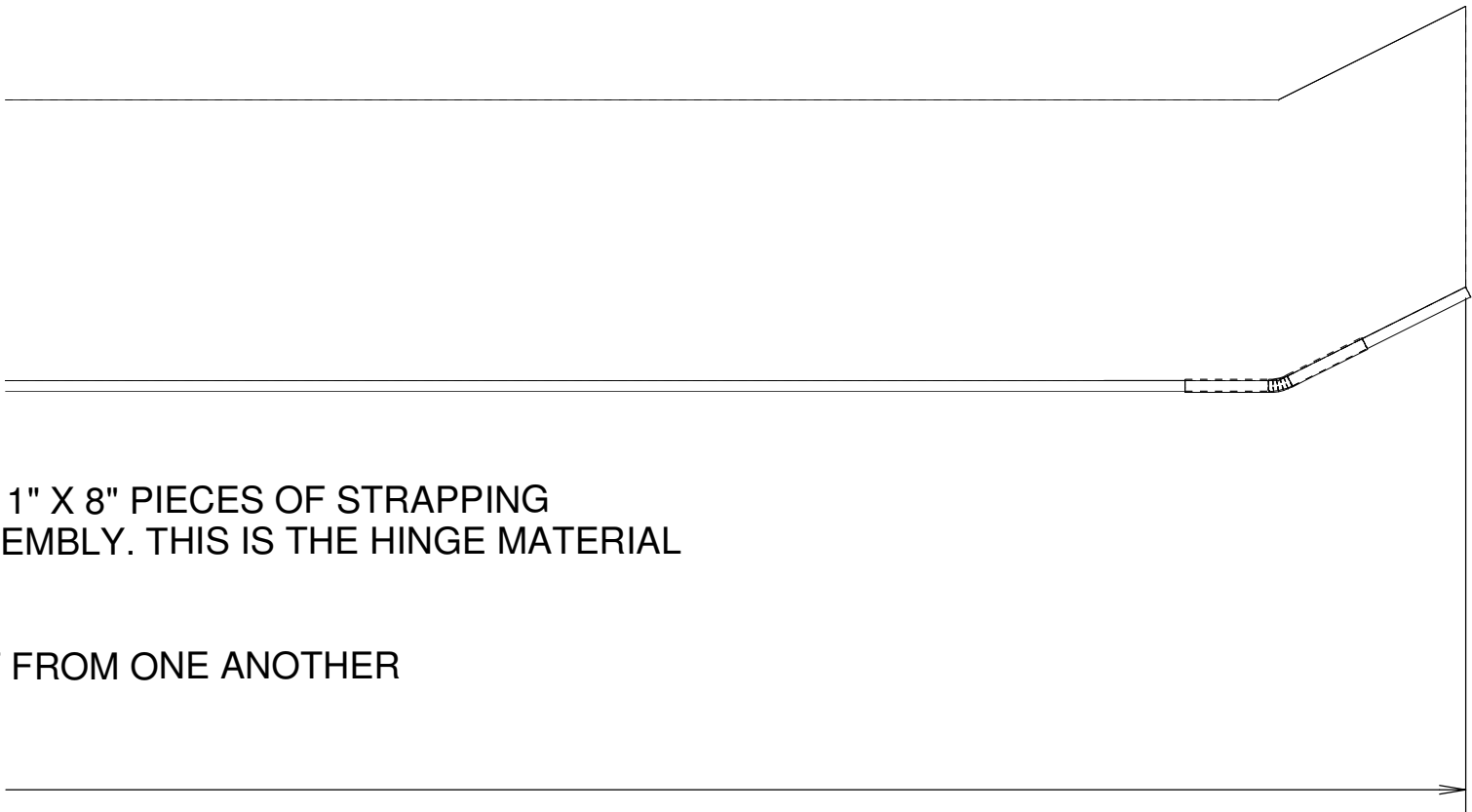


BUILD 2 OF THESE ASSEMBLIES AND ADD 1" X 1" TAPE TO TOP AND BOTTOM OF EACH ASSEMBLY FOR THE BLADE.

THEN GLUE THEM AT 90 DEGREES APART FROM EACH OTHER.

26in

DESIGNED BY LEAD
CAD BY DZ1SFB



ADD 1" X 8" PIECES OF STRAPPING
ASSEMBLY. THIS IS THE HINGE MATERIAL

KEEP THEM SEPARATE FROM ONE ANOTHER

B

A

HEADFEATHER

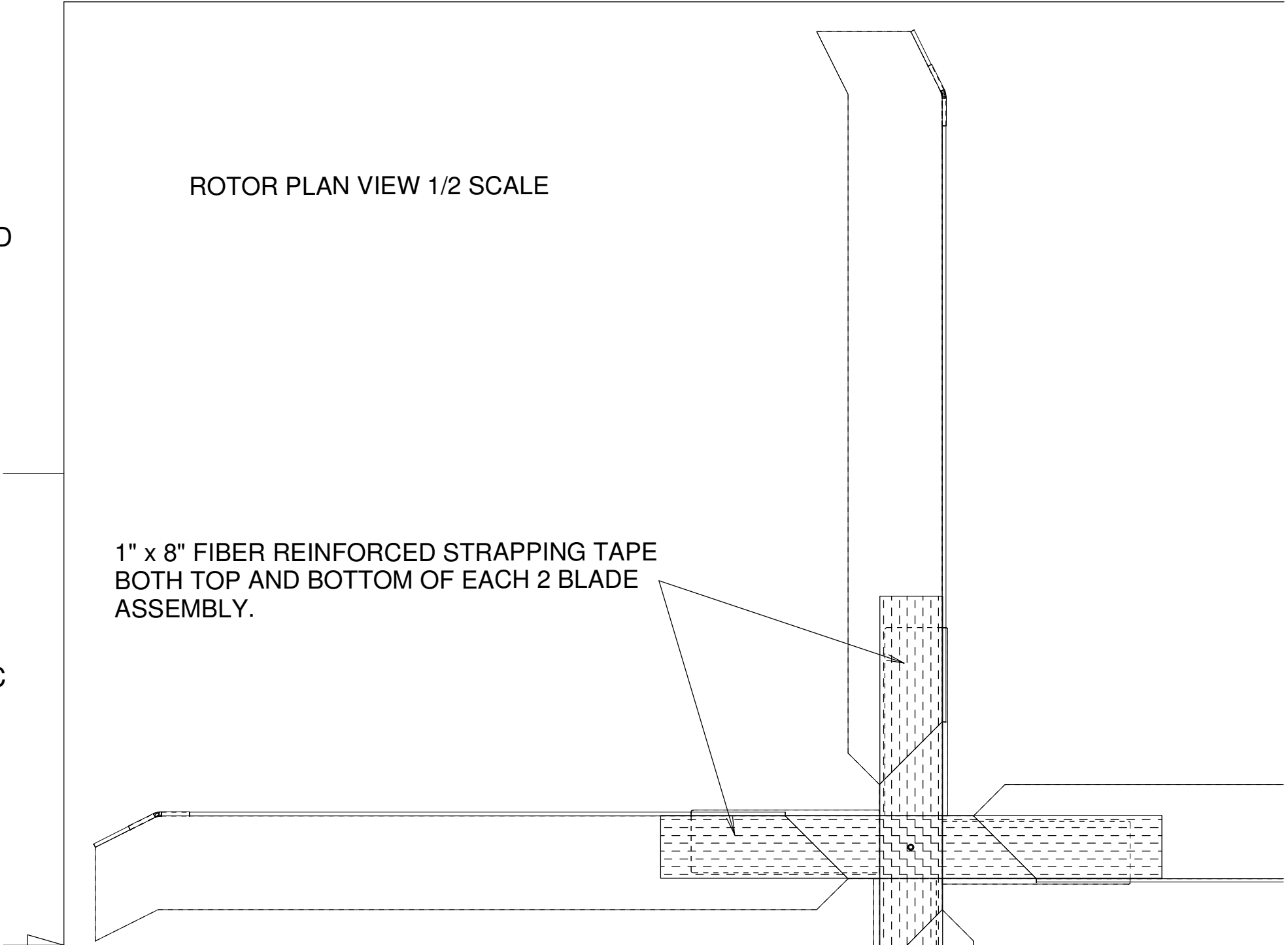
| | | | |
|-----------------------------------|-----------|--|-----|
| TITLE | | | |
| APACHE AG-64 DELTA 3 ROTOR | | | |
| SIZE | CAGE CODE | DWG NO | REV |
| C | | COMMERCIAL RIGHTS RESERVED 08-FEB-2010 | |
| SCALE | | SHEET | |

ROTOR PLAN VIEW 1/2 SCALE

D

1" x 8" FIBER REINFORCED STRAPPING TAPE
BOTH TOP AND BOTTOM OF EACH 2 BLADE
ASSEMBLY.

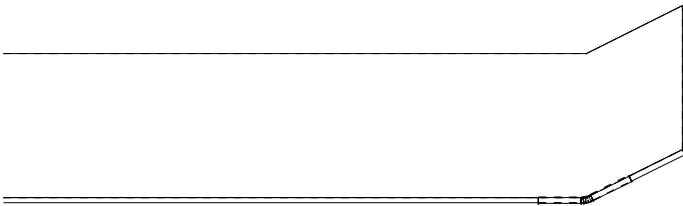
C

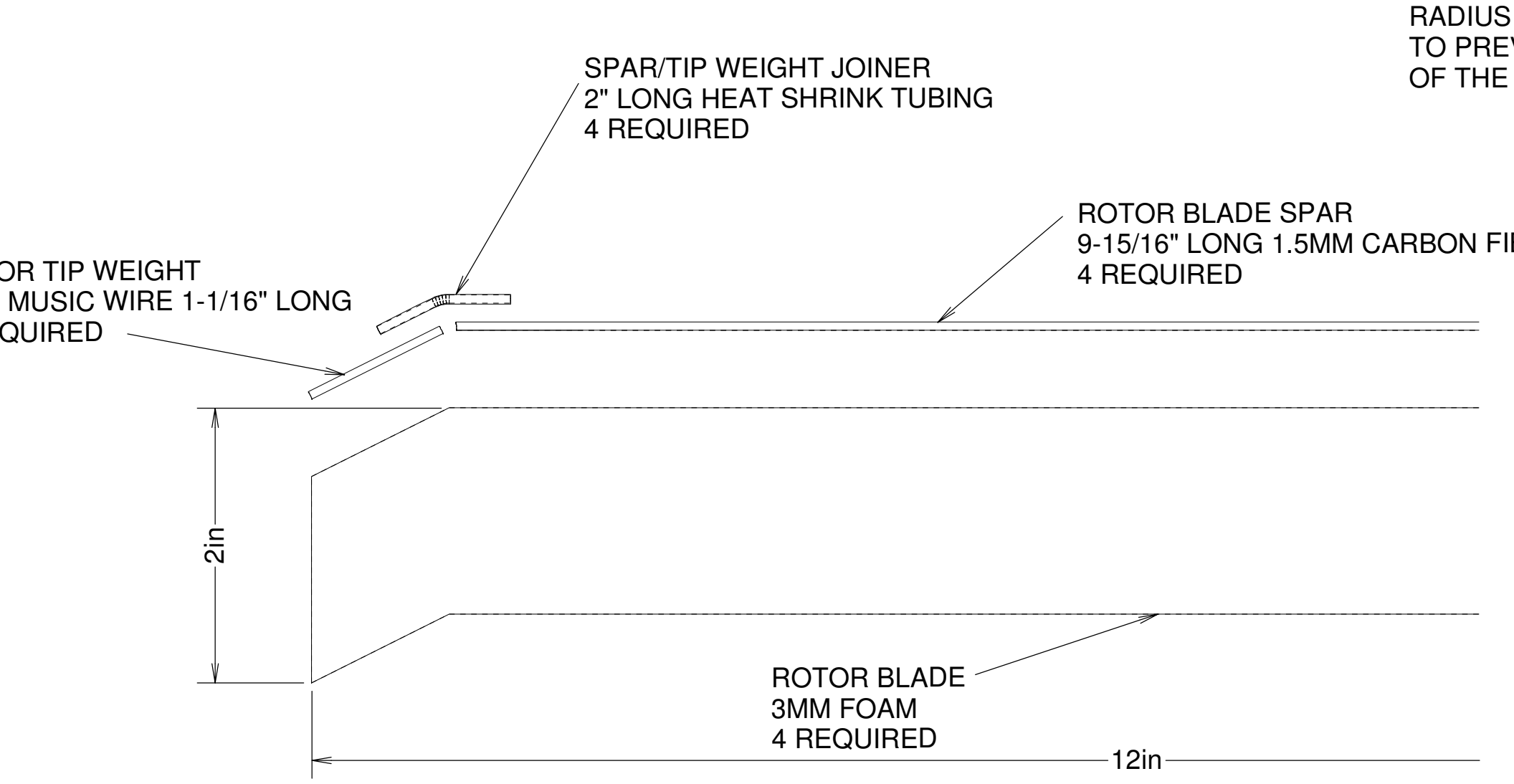


ROTOR BUILDING INSTRUCTIONS

- 1) Make hubs and blades
- 2) Assemble rotor blade spar, tip weight, and joiner.
Then glue LE spar assemblies to blades flush with the bottom of rotor blades.
- 3) Tack glue the blades to the hubs,
I used hot glue
- 4) 1" x 8" fiber tape across blade-hub-blade
top and bottom
- 5) Crease the foam where it joins the hub to
form hinge
- 6) stack the individual 2 blade rotors at 90 degrees
- 7) Insert 3/32" x 1" brass tube spindle bearing,
glue in place with cone fillet glue on top and bottom
- 8) Install 1" x 3" x 1/32" limiter plates on bottom of
each hub. Make sure plates overlap LE spars

ROTOR TIP
1/16" MUS
4 REQUIR





1

RADIUS OUTSIDE EDGES
TO PREVENT CHAFFING
OF THE ROTORS

ON FIBER ROD

FLAPPING LIMITER PLATE
1/32" PLYWOOD - 1" X 3"
4 REQUIRED

ROTOR HUB PLATE
1/8" PLYWOOD 1" X 3"
2 REQUIRED

3/32" HOLE

ROTOR HUB BEARING
3/32" BRASS TUBING 1" LONG
1 REQUIRED

D

C

