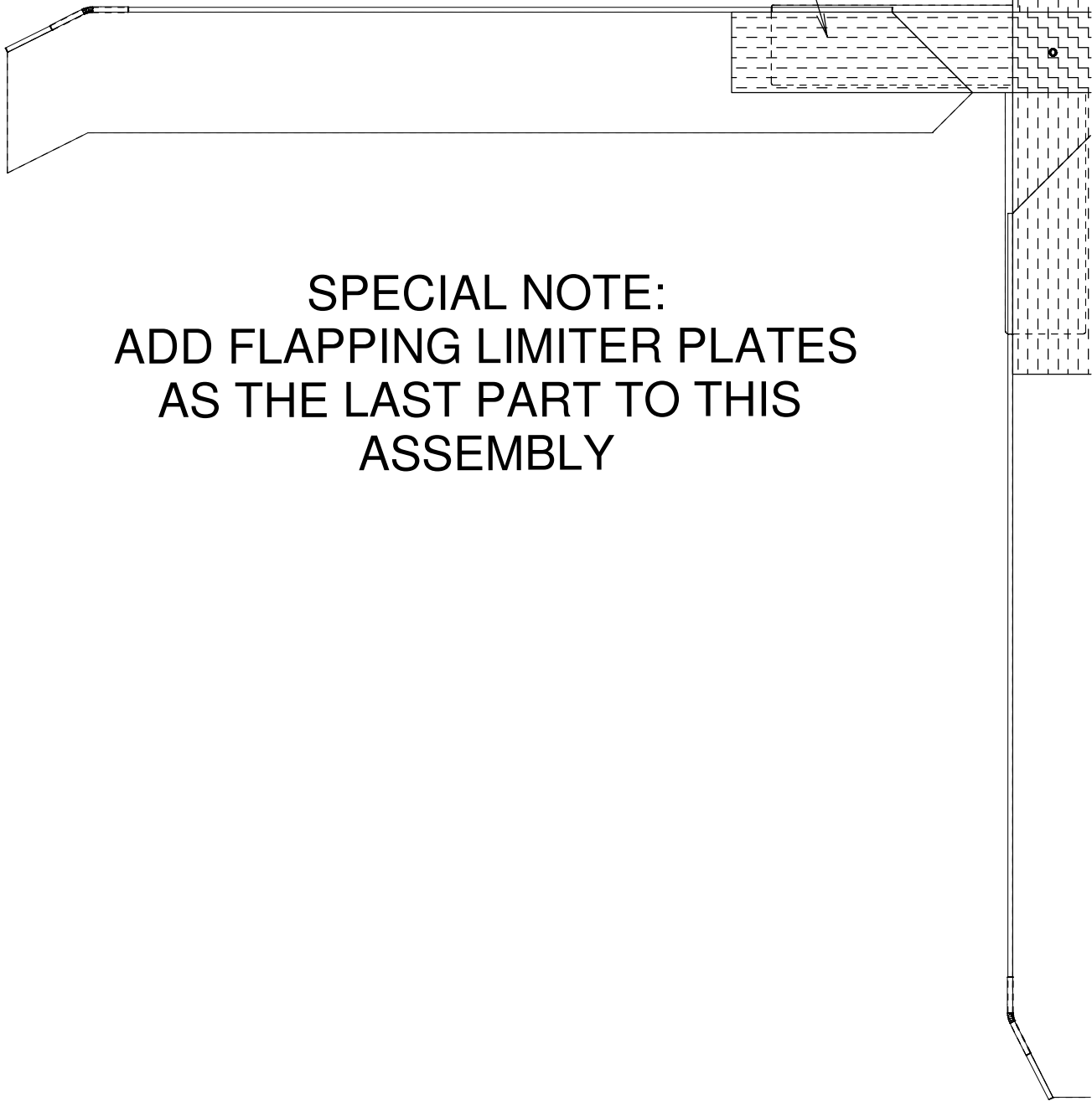
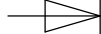


1" x 8" FIBER REINFORCED STRAPPING TAPE
BOTH TOP AND BOTTOM OF EACH 2 BLADE
ASSEMBLY.

C

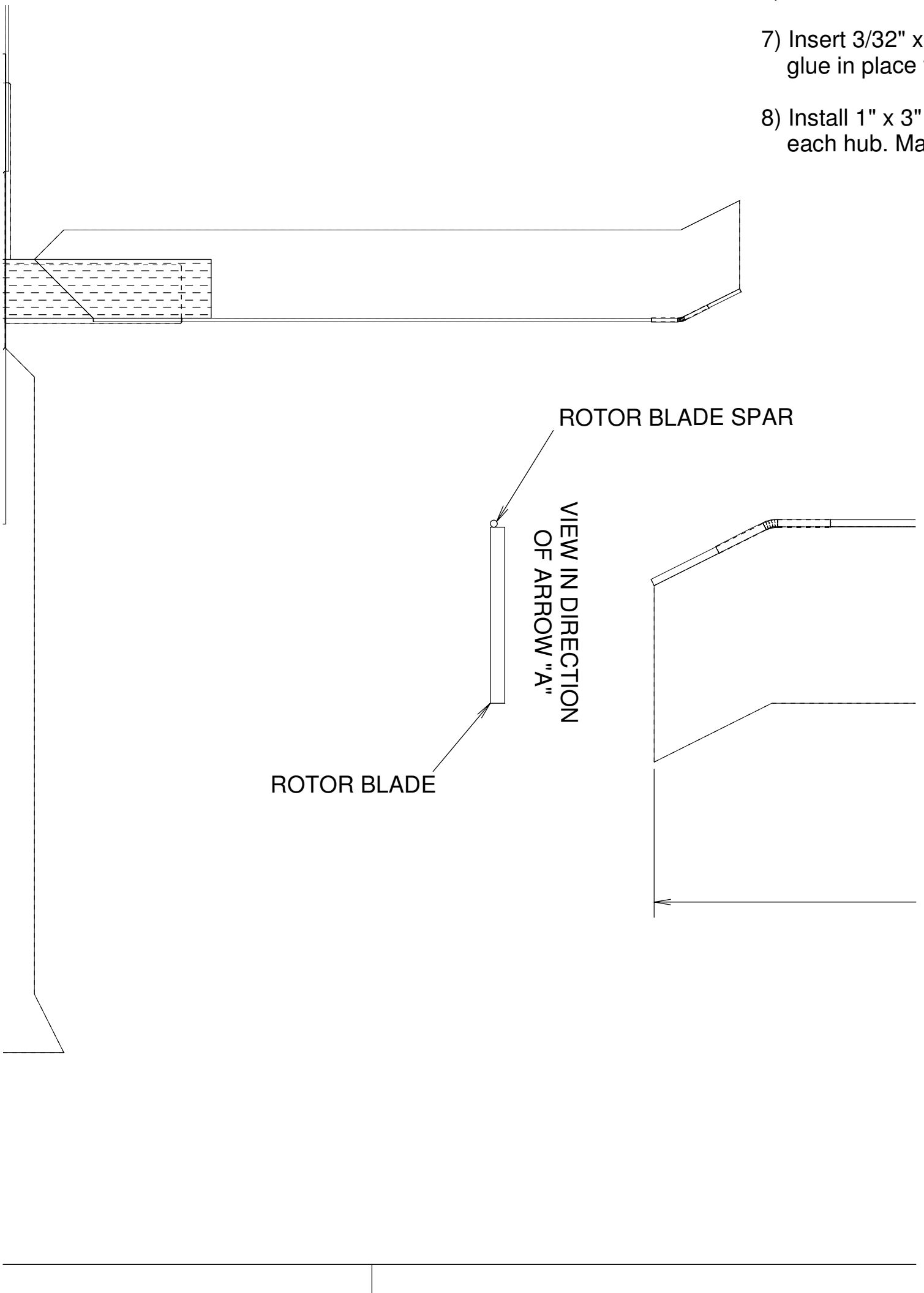


**SPECIAL NOTE:
ADD FLAPPING LIMITER PLATES
AS THE LAST PART TO THIS
ASSEMBLY**

B

A

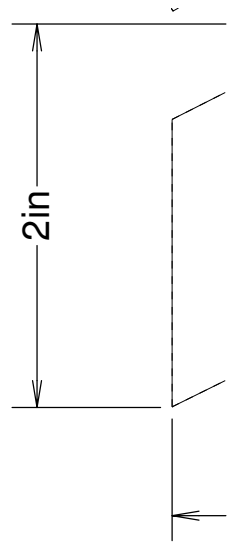
- 6) stack the individ
- 7) Insert 3/32" x 1" glue in place wi
- 8) Install 1" x 3" x each hub. Make

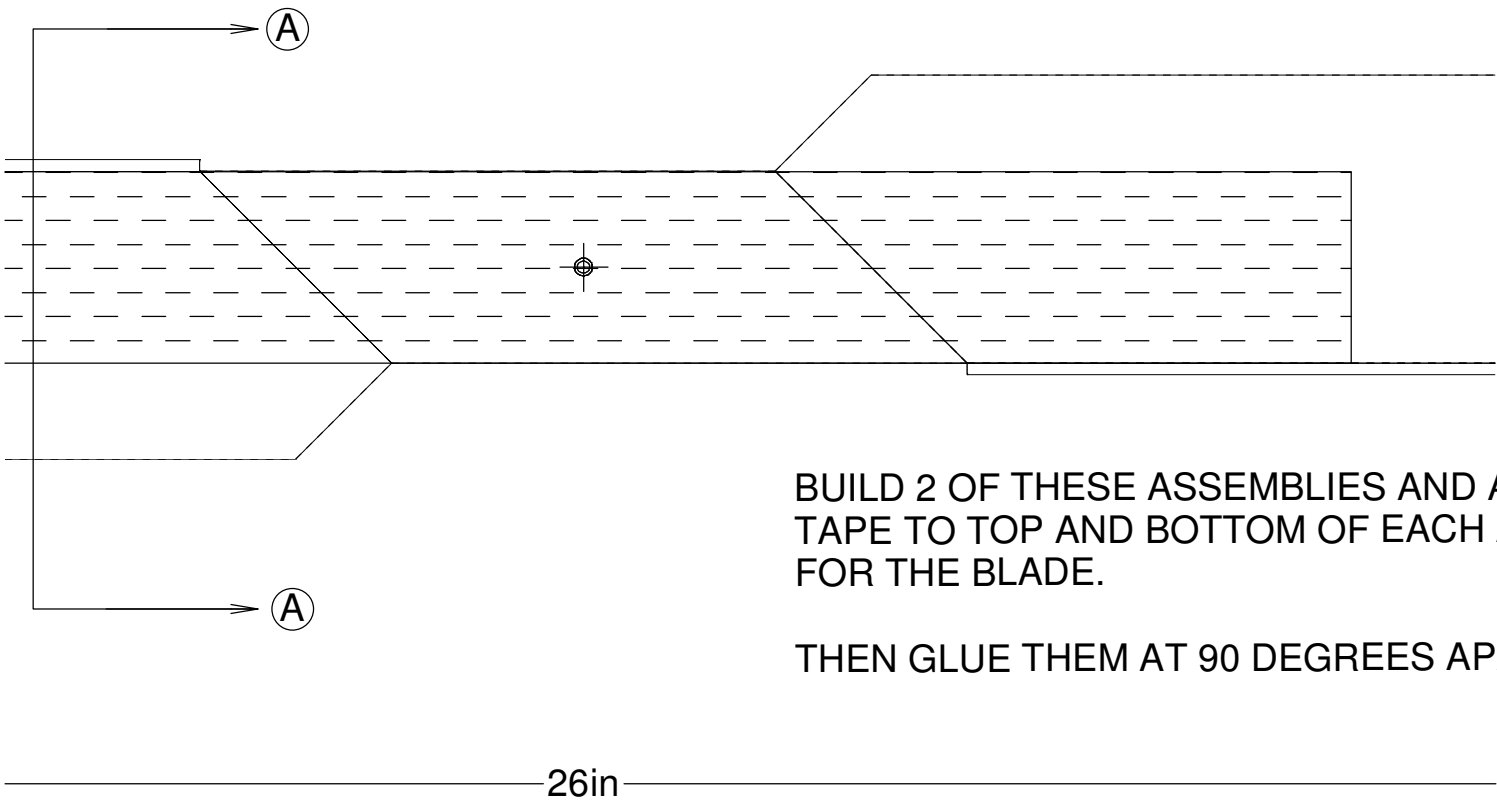
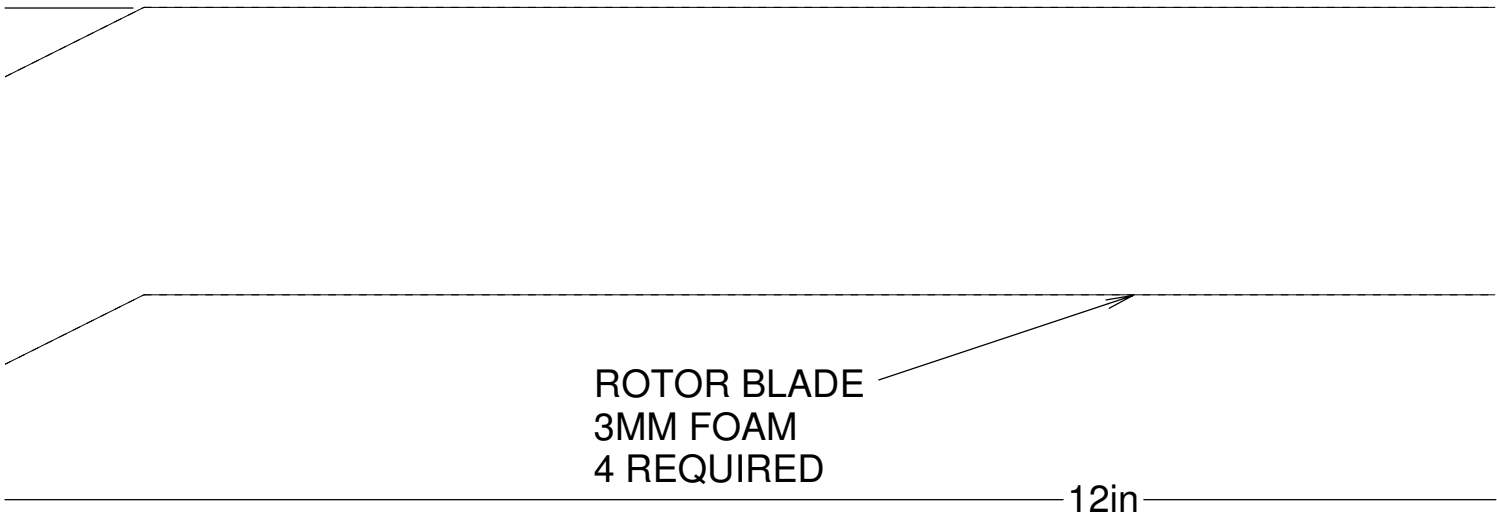


individual 2 blade rotors at 90 degrees

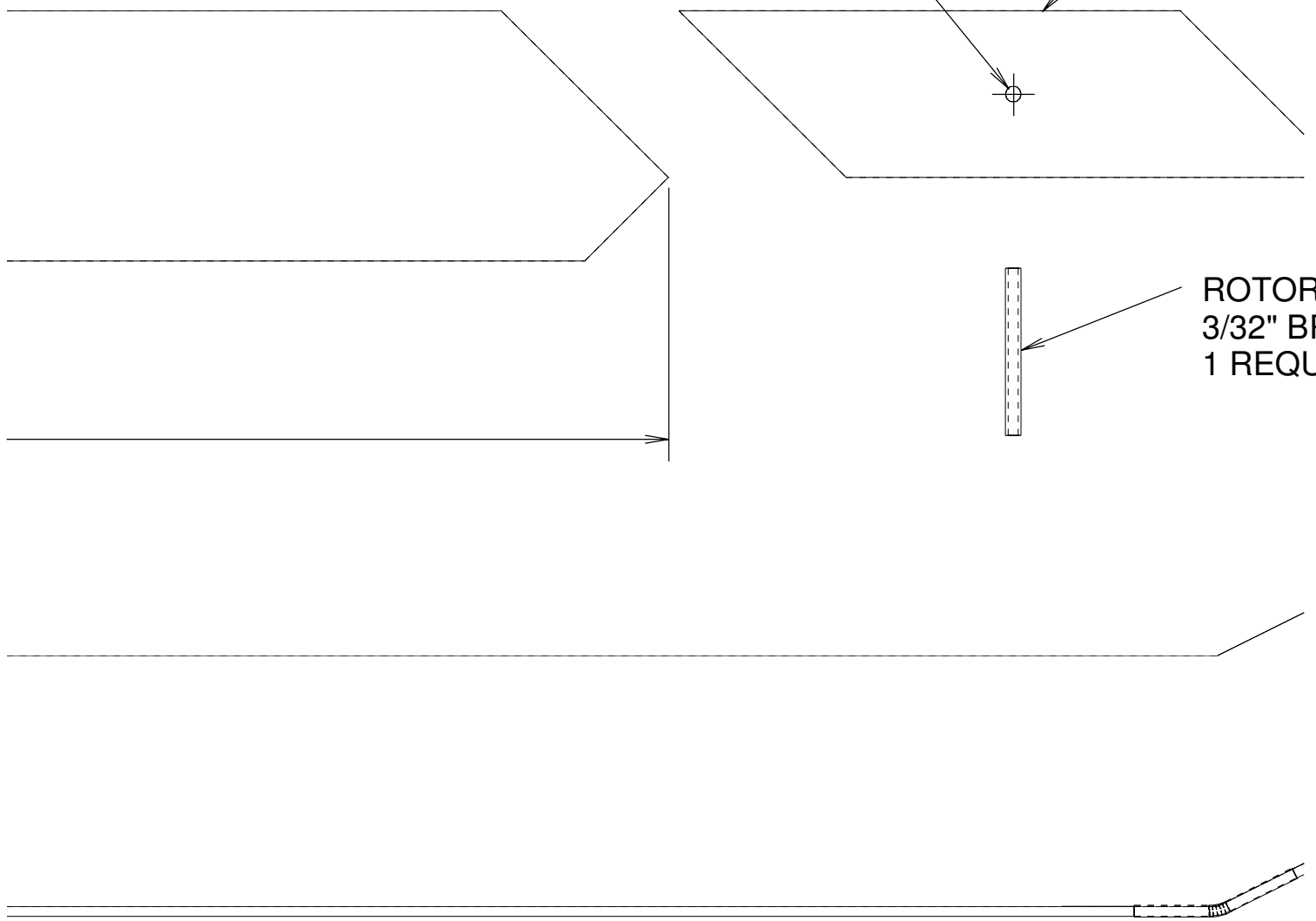
2" x 1" brass tube spindle bearing,
face with cone fillet glue on top and bottom

3" x 3" x 1/32" limiter plates on bottom of
Make sure plates overlap LE spars





DESIGNED BY LI
CAD BY DZ1SFB



ROTOR H
 3/32" BRA
 1 REQUIF

ADD 1" X 8" PIECES OF STRAPPING
 EACH ASSEMBLY. THIS IS THE HINGE MATERIAL

APART FROM ONE ANOTHER

BY LEADFEATHER
 SFB

TITLE

APACHE AG-64 DELTA 3

SIZE

CAGE CODE

DWG NO

C

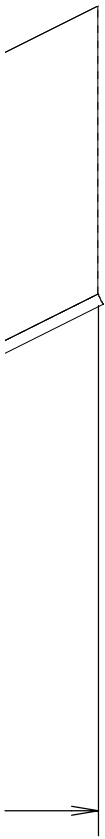
COMMERCIAL RIGHTS RESERVED 08

SCALE

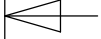
SHEET



ROTOR HUB BEARING
1" BRASS TUBING 1" LONG
REQUIRED



C



B



A

3 ROTOR

ED 08-FEB-2010

REV

4

ROTOR PLAN VIEW 1/2 SCALE

D

1" x 8" FIBER REINFORCED STRAPPING TAPE
BOTH TOP AND BOTTOM OF EACH BLADE

ROTOR BUILDING

- 1) Make hubs and
- 2) Assemble rotor
Then glue LE sp
the bottom of ro
- 3) Tack glue the b
I used hot glue
- 4) 1" x 8" fiber tap
top and bottom
- 5) Crease the foar
form hinge
- 6) stack the individ
- 7) Insert 2/32" or 1

3



BUILDING INSTRUCTIONS

os and blades

e rotor blade spar, tip weight, and joiner.
e LE spar assemblies to blades flush with
n of rotor blades.

e the blades to the hubs,
t glue

er tape across blade-hub-blade
ottom

e foam where it joins the hub to
e

individual 2 blade rotors at 90 degrees

2" x 1" brass tube, spindle bearing

ROTOR TIP WEIGHT
1/16" MUSIC WIRE 1-1/16" LONG
4 REQUIRED

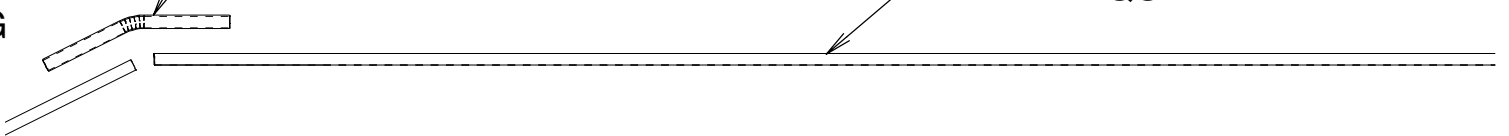


SPAR/TIP WEIGHT JOINER
2" LONG HEAT SHRINK TUBING
4 REQUIRED

ROTOR BLADE SPAR
9-15/16" LONG 1.5MM CARBON
4 REQUIRED

RAI
TO
OF

NG



1

RADIUS OUTSIDE EDGES
TO PREVENT CHAFFING
OF THE ROTORS

FLAPPING LIMITER PLATE
1/32" PLYWOOD - 1" X 3"
4 REQUIRED

CARBON FIBER ROD

ROTOR
1/8" PL
2 REQ

3/32" HOLE



ROTOR HUB PLATE
1/8" PLYWOOD 1" X 3"
REQUIRED

D