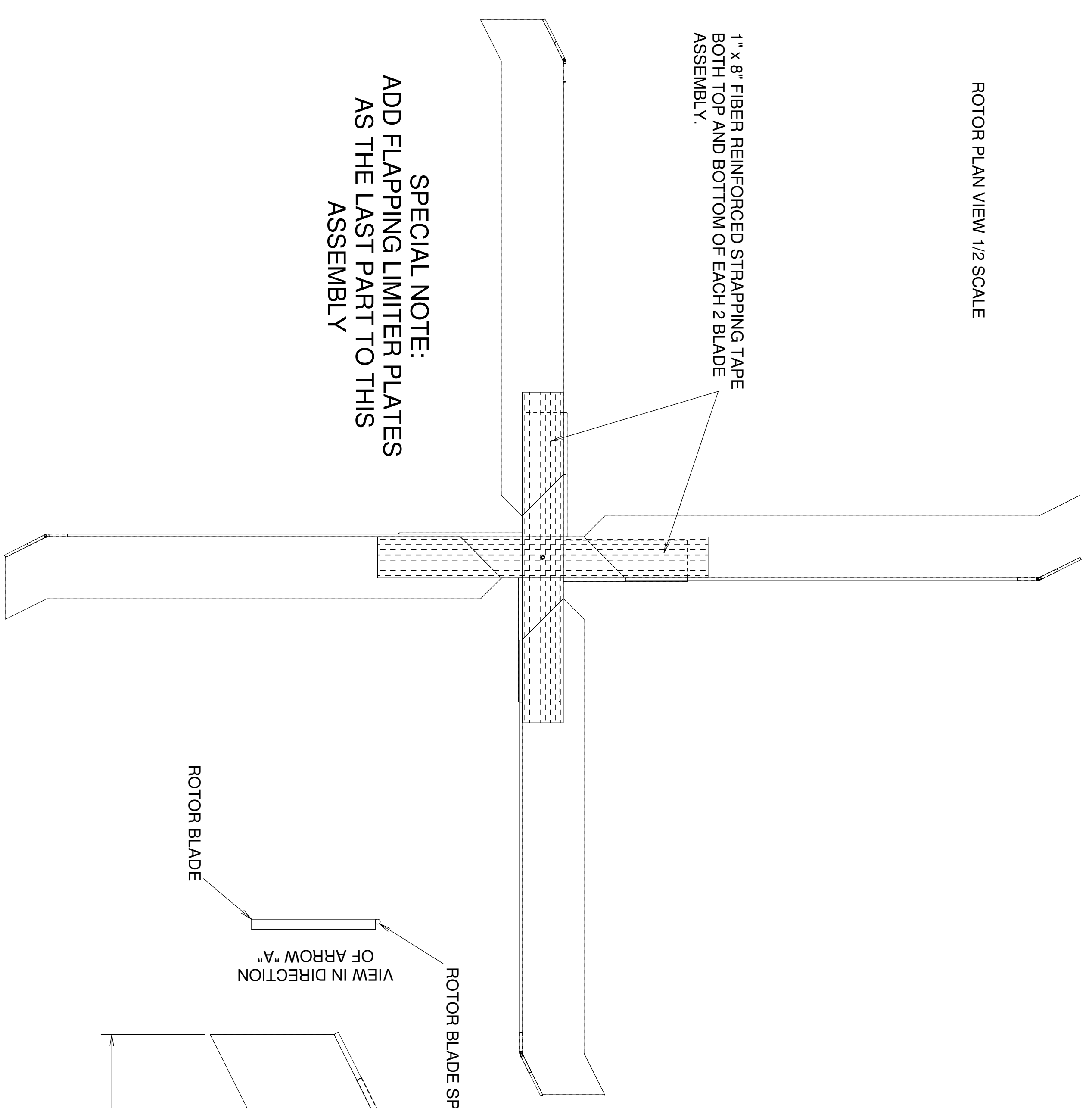
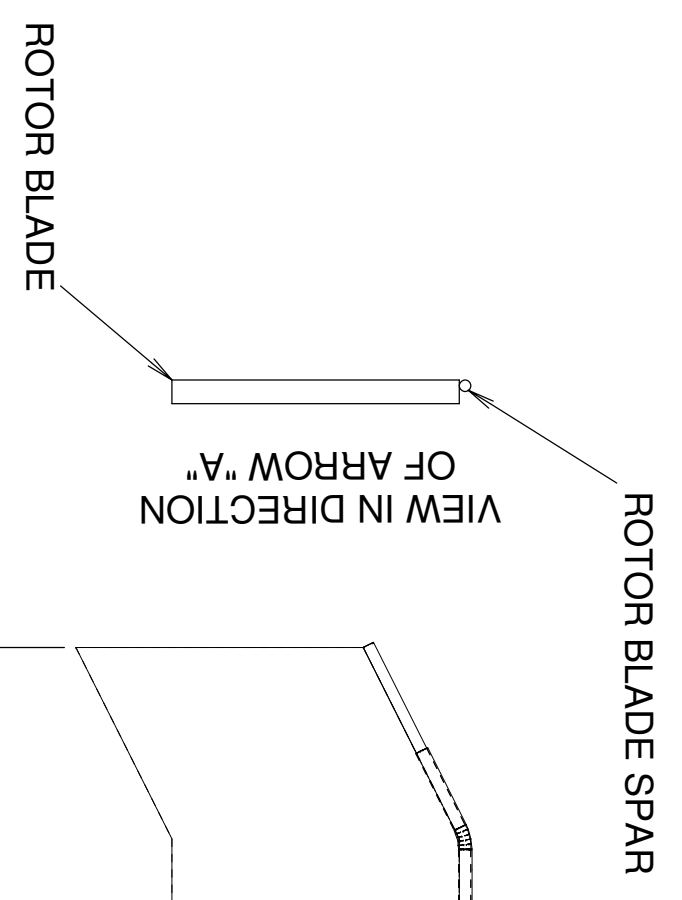


ROTOR PLAN VIEW 1/2 SCALE



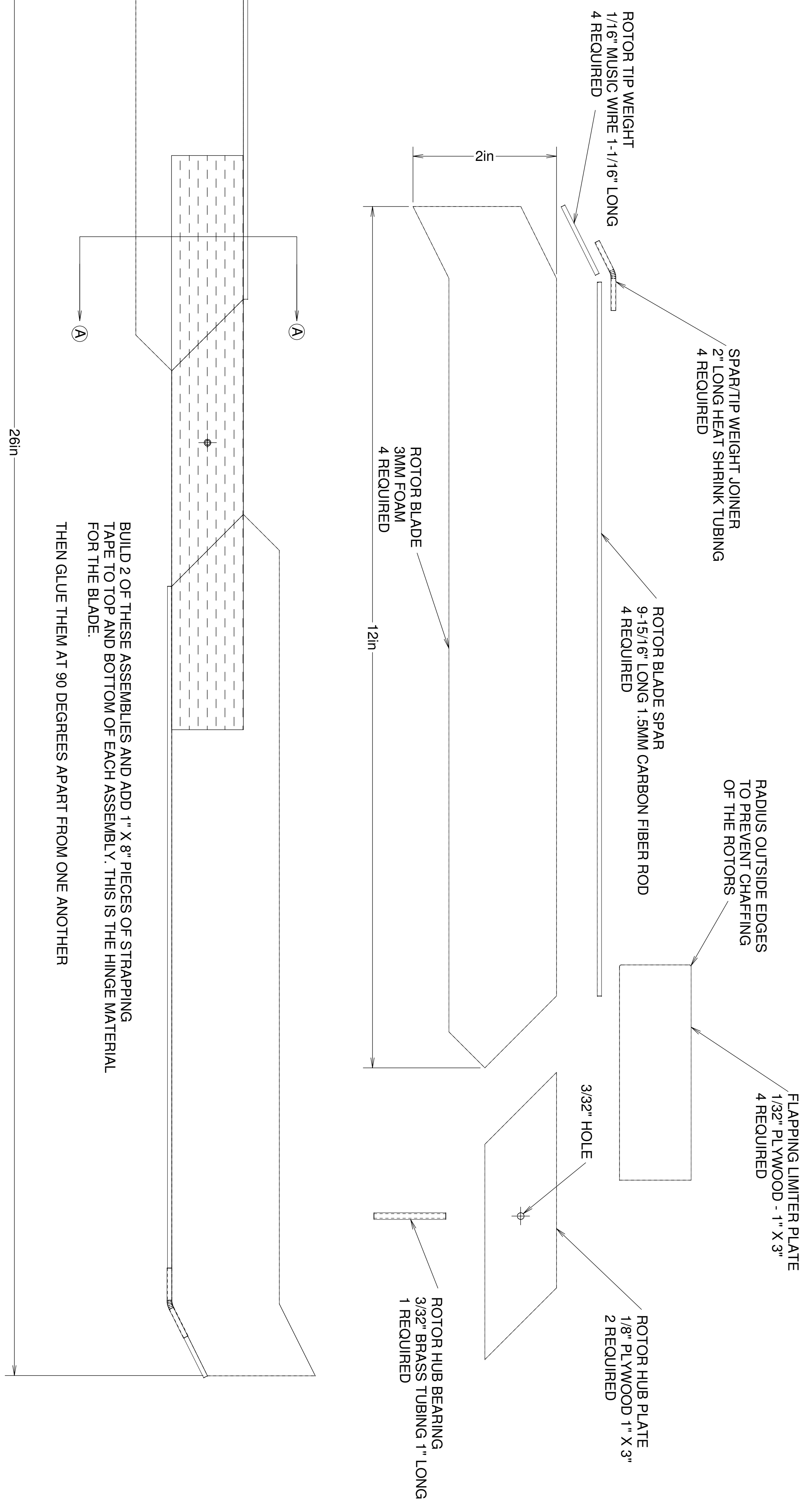
1" x 8" FIBER REINFORCED STRAPPING TAPE BOTH TOP AND BOTTOM OF EACH 2 BLADE ASSEMBLY.

SPECIAL NOTE:
ADD FLAPPING LIMITER PLATES AS THE LAST PART TO THIS ASSEMBLY



ROTOR BUILDING INSTRUCTIONS

- 1) Make hubs and blades
- 2) Assemble rotor blade spar, tip weight, and joiner. Then glue LE spar assemblies to blades flush with the bottom of rotor blades.
- 3) Tack glue the blades to the hubs, I used hot glue
- 4) 1" x 8" fiber tape across blade-hub-blade top and bottom
- 5) Crease the foam where it joins the hub to form hinge
- 6) stack the individual 2 blade rotors at 90 degrees
- 7) Insert 3/32" x 1" brass tube spindle bearing, glue in place with cone filler glue on top and bottom
- 8) Install 1" x 3" x 1/32" limiter plates on bottom of each hub. Make sure plates overlap LE spars



A

B

C

D

A

B

C

D

DESIGNED BY LEADFEATHER
CAD BY DZISRB

TITLE
APACHE AG-64 DELTA 3 ROTOR

SIZE C CAGE CODE DWG NO COMMERCIAL RIGHTS RESERVED 08-FEB-2010 REV SHEET